

Monoclonal Anti-SARS-Related Coronavirus 2 Spike Glycoprotein Receptor Binding Domain (RBD), Chimeric Antibody Human IgG1, Clone AM122 (produced *in vitro*)

Catalog No. NR-55407

ACROBiosystems Catalog No. S1N-M122

Product Description:

Antibody Class: Human IgG1κ

Clone: AM122

Chimeric monoclonal antibody prepared against the severe acute respiratory syndrome-related coronavirus 2 (SARS-CoV-2) spike (S) glycoprotein receptor binding domain (RBD) was produced in HEK 293 cells, combining the variable region of the mouse monoclonal antibody with human IgG1 constant domain. The mouse monoclonal antibody was obtained from a mouse immunized with recombinant S1 protein. NR-55407 was lyophilized from 54 µL bulk antibody in a 0.2 µm filtered solution of phosphate buffered saline (PBS; pH 7.4) with 10% trehalose.

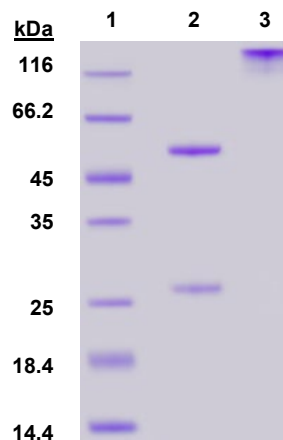
Lot: C552P1-20CRF1-W8

Receipt Date: 13MAY2021

TEST	SPECIFICATIONS	RESULTS
Appearance	White powder	White powder
SDS-PAGE Analysis	Protein band of interest represents > 90% of total staining intensity	Dominant bands of ~ 50 and 30 kDa under reducing conditions and ~ 116 kDa under non-reducing conditions represent > 95% of total staining intensity (Figure 1)
Final Product Amount per vial	Report results	100 µg
Functional Activity by ELISA	Reactive	Reactive ¹
Filtration	0.2 µm sterile-filtered	0.2 µm sterile-filtered
Endotoxin Content (Limulus Amebocyte Lysate Assay)	Report results	< 1.0 EU/µg

¹Using 2 µg/mL of immobilized SARS-CoV-2 S1 protein (ACROBiosystems Cat. No. S1N-C52H2) with a linear range of 0.2 to 3 ng/mL

Figure 1: SDS-PAGE Analysis



Lane 1: MW ladder
 Lane 2: NR-55407 (reducing conditions)
 Lane 3: NR-55407 (non-reducing conditions)

/Sonia Bjorum Brower/

Sonia Bjorum Brower

23 MAY 2024

Technical Manager or designee, ATCC Federal Solutions

ATCC®, on behalf of BEI Resources, hereby represents and warrants that the material provided under this certificate has been subjected to the tests and procedures specified and that the results described, along with any other data provided in this certificate, are true and accurate to the best of ATCC®'s knowledge.

ATCC® is a trademark of the American Type Culture Collection.

You are authorized to use this product for research use only. It is not intended for human use.

