

**Staphylococcus epidermidis, Strain NIHLM003**

**Catalog No. HM-897**

**Product Description:**

*Staphylococcus epidermidis* (*S. epidermidis*), strain NIHLM003 was isolated in 2008 from the umbilicus of a healthy 27-year-old white male volunteer in the United States. HM-897 was produced by the inoculation of BEI Resources seed lot 61646447 into Nutrient broth and grown for 1 day at 37°C in an aerobic atmosphere. Broth inoculum was added to Nutrient agar kolles, which were grown for 1 day at 37°C in an aerobic atmosphere to produce this lot. Quality control testing was completed under propagation conditions unless otherwise noted.

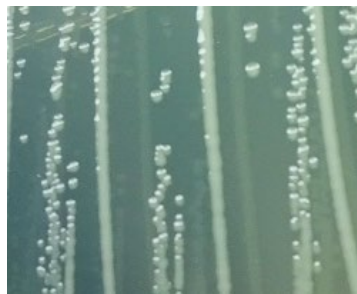
Note: Quality control of HMP material is only performed to demonstrate that the material distributed by BEI Resources is identical to the deposited material. It should not be considered a complete characterization of the deposited organism.

**Lot: 70057704**

**Manufacturing Date: 11JAN2023**

TEST	SPECIFICATIONS	RESULTS
<b>Phenotypic Analysis</b> Cellular morphology Colony morphology 1 day at 37°C in an aerobic atmosphere on Nutrient agar Motility (wet mount)	Gram-positive cocci Report results  Report results	Gram-positive cocci Circular, low convex, entire, smooth and cream (Figure 1)  Non-motile
<b>Genotypic Analysis</b> Sequencing of 16S ribosomal RNA gene (~ 1490 base pairs)	≥ 99% sequence identity to <i>S. epidermidis</i> , Strain NIHLM003 (GenBank: AKHB01000001.1)	100% sequence identity to <i>S. epidermidis</i> , Strain NIHLM003 (GenBank: AKHB01000001.1)
<b>Purity (post-freeze)</b> 7 days at 37°C in an aerobic atmosphere with and without 5% CO <sub>2</sub> on Nutrient agar	Growth consistent with expected colony morphology	Growth consistent with expected colony morphology
<b>Viability (post-freeze)</b> 1 day at 37°C in an aerobic atmosphere on Nutrient agar	Growth	Growth

**Figure 1: Colony Morphology**



/Sonia Bjorum Brower/

Sonia Bjorum Brower

23 AUG 2023

Technical Manager or designee, ATCC Federal Solutions

ATCC®, on behalf of BEI Resources, hereby represents and warrants that the material provided under this certificate has been subjected to the tests and procedures specified and that the results described, along with any other data provided in this certificate, are true and accurate to the best of ATCC®'s knowledge.

ATCC® is a trademark of the American Type Culture Collection.

You are authorized to use this product for research use only. It is not intended for human use.

