

Babesia microti, Strain GI

Catalog No. NR-44070

Product Description:

Babesia microti (*B. microti*), strain GI was isolated from blood obtained from a human case of babesiosis in Nantucket, Massachusetts, USA, in 1983. NR-44070 was produced by intraperitoneal injection of BEI Resources seed lot 61937809 into one Golden Syrian hamster. Infection was allowed to progress for 14 days until the parasitemia reached approximately 10%. Infected blood was collected by cardiac puncture and used to inoculate five Golden Syrian hamsters. Infection was allowed to progress for 9 days until the first peak of parasitemia was reached and infected blood was collected by cardiac puncture and pooled to produce this lot.

Lot: 70062613

Manufacturing Date: 30AUG2023

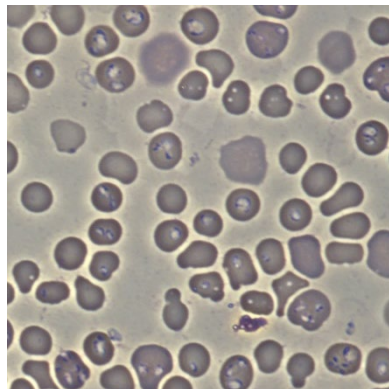
TEST	SPECIFICATIONS	RESULTS
Cell Morphology¹ 14 days of infection by examination of Giemsa-stained blood smears	Report results	Ring-like and tetrad structures visible (Figure 1)
Genotypic Analysis² Sequencing of internal transcribed spacer (ITS) 1, 5.8S ribosomal RNA gene, ITS 2 (~ 750 base pairs)	≥ 99% sequence identity to <i>B. microti</i> , strain GI (GenBank: JGUY01000109.1)	100% sequence identity to <i>B. microti</i> , strain GI (GenBank: JGUY01000109.1)
Level of Parasitemia (pre-freeze)² 9 days of infection by microscopic counts of Giemsa-stained blood smears	Report results	36.2%
Viability^{1,3}	Growth in inoculated hamster	Growth in inoculated hamster

¹Testing completed on vial, post-freeze material

²Testing completed on bulk material prior to vialing and freezing

³Viability of the material following cryopreservation was determined by inoculation of one Golden Syrian hamster and examination of parasitemia every 3 to 7 days for 14 days post-infection (52% parasitemia).

Figure 1: Cellular Morphology



/Sonia Bjorum Brower/

Sonia Bjorum Brower

08 APR 2024

Technical Manager or designee, ATCC Federal Solutions

ATCC®, on behalf of BEI Resources, hereby represents and warrants that the material provided under this certificate has been subjected to the tests and procedures specified and that the results described, along with any other data provided in this certificate, are true and accurate to the best of ATCC®'s knowledge.

ATCC® is a trademark of the American Type Culture Collection.

You are authorized to use this product for research use only. It is not intended for human use.

