

Mycobacterium leprae*, Strain NHDP, Gamma-Irradiated Whole Cells (Lyophilized)*Catalog No. NR-19326**

This reagent is the tangible property of the U.S. Government.

Product Description:

NR-19326 is a preparation of purified *Mycobacterium leprae*, strain NHDP whole cells derived from infected armadillo liver and spleen tissue. The cells are inactivated by gamma irradiation using a Cs source with delivery of 1.44 to 2.4 MRad of ionization radiation (dose range is provided due to variation across the sample chamber).

Lot: 70065751**Manufacturing Date: 28MAR2024**

Production and QC testing were performed by Colorado State University (CSU). The CSU production documentation for lot 24.NHDP63.3.28.WCg is attached.

ATCC®, on behalf of BEI Resources, hereby represents and warrants that the material provided under this certificate has been subjected by the contractor to the tests and procedures specified and that the results described, along with any other data provided in this certificate, are true and accurate to the best of ATCC®'s knowledge.

ATCC® is a trademark of the American Type Culture Collection.

You are authorized to use this product for research use only. It is not intended for human use.



QC SHEET FOR LYOPHILIZED γ -IRRADIATED *M.LEPRAE* WHOLE CELLS

General Information

BEI Catalog and Lot Number: NR-19326 ; Lot #70065751
Product Description: Irradiated Whole Cells Mycobacterium leprae
CSU Lot Number: 24.NHDP63.3.28.WCg
Species : Mycobacterium leprae
Strain : NHDP- 63

Cell Prep Pool :

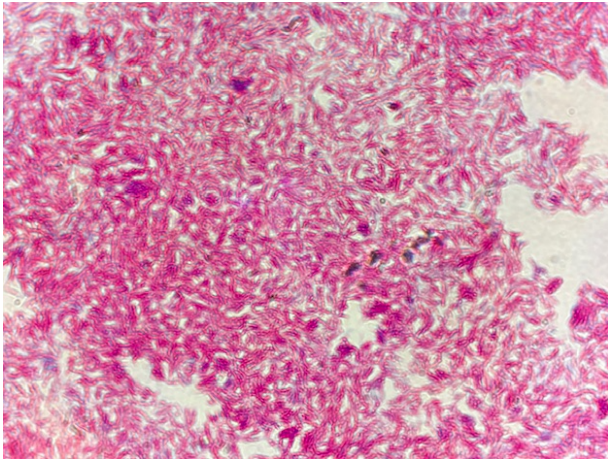
Armadillo :18L402 Spleen#2 Harvested : 01.19.2024 mg cells : 90.6
Armadillo :18L402 Spleen#1 Harvested : 02.16.2024 mg cells : 159.4

Protocol used for Harvest (SOP #): PP050.1

Notebook pages : Tissue prep book #4 ---- pp. 81,82,83 and 84
mg Weight Total : 250 mg Concentration : 10.00mg / vial
Date Irradiated : 03.28.2024 By : JB

Quality Control Information :

No growth on LJ slant, BHI broth or TSA plate
Slide picture is representative acid-fast stain of whole cell pool.



Aliquot Information : Whole cells from Armadillo spleen were pooled, resuspended in buffered water, aliquoted to 10mg/ml vial, irradiated, frozen and lyophilized.

Anita Amin

Anita Amin 04.11.2024
Research Associate Date

RA Staudenmaier 4/24/2024

RA Staudenmaier 4/24/2024
Lab Supervisor Date