

**Dengue Virus Type 4 Primers**

**Catalog No. NR-12081**

This reagent is the tangible property of the U.S. Government.

**Product Description:**

NR-12081 contains forward and reverse primers that specifically amplify a region of the NS2A gene of dengue virus type 4 (DENV-4). The viral genomic RNA from DENV-4, H241 (tissue culture adapted) (BEI Resources NR-86) was extracted using a Qiagen QIAamp® Viral RNA Mini kit and used as template.

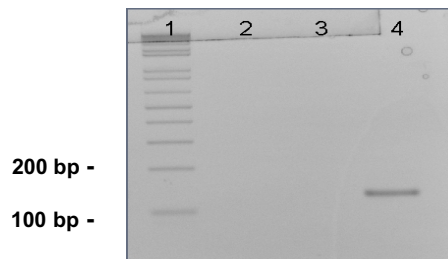
**Lot: 70066252**

**Manufacturing Date: 20JUL2009**

BEI Resources is committed to ensuring digital accessibility for people with disabilities. This Certificate of Analysis contains complex tables and may not be fully accessible. Please let us know if you encounter accessibility barriers and a fully accessible document will be provided: E-mail: [Contact@BEIResources.org](mailto:Contact@BEIResources.org). We try to respond to feedback within 24 hours.

| TEST   | SPECIFICATIONS                     | RESULTS                     |
|--|------------------------------------|-----------------------------|
| <b>PCR Amplification and Sequencing</b><br>Amplicon size<br>NCBI blast of sequence | Expected size<br>Expected sequence | ~ 130 bp (Figure 1)<br>NS2A |
| <b>Specificity</b>   | Specific for DENV-4 NS2A           | Specific for DENV-4 NS2A    |
| <b>Concentration of Each Primer</b>  | Report results                     | 10 µM                       |

**Figure 1: RT-PCR Amplification of Genomic RNA from DENV-4, H241 (tissue culture adapted) Using NR-12081**



Lane 1: Invitrogen™ 1 Kb Plus DNA Ladder™  
 Lane 2: Negative Control (Water)  
 Lane 3: Negative Control (RNA from Dengue Virus Type 3, H87; BEI Resources NR-80)  
 Lane 4: RNA from DENV-4, H241 (tissue culture adapted) (BEI Resources NR-86)  
Note: The viral genomic RNA is in a background of cellular and carrier RNA.

/Sonia Bjorum Brower/

Sonia Bjorum Brower

Technical Manager or designee, ATCC Federal Solutions

11 APR 2024

ATCC®, on behalf of BEI Resources, hereby represents and warrants that the material provided under this certificate has been subjected to the tests and procedures specified and that the results described, along with any other data provided in this certificate, are true and accurate to the best of ATCC®'s knowledge.

ATCC® is a trademark of the American Type Culture Collection.  
 You are authorized to use this product for research use only. It is not intended for human use.

