

***Phocaeicola vulgatus*, Strain CL09T03C04 (Deposited as *Bacteroides vulgatus*, Strain CL09T03C04)**

**Catalog No. HM-720**

**Product Description:**

*Phocaeicola vulgatus* (*P. vulgatus*), strain CL09T03C04 was isolated from healthy adult human feces in Boston, Massachusetts, USA. It was previously referred to as *Bacteroides vulgatus*. HM-720 was produced by the inoculation of BEI Resources seed lot 63007605 into Modified Reinforced Clostridial broth and incubated for 3 days at 37°C in an anaerobic atmosphere (< 5% O<sub>2</sub>; Remel™ Pack-Anaero™). The material from the initial growth was passaged once in Tryptic Soy agar with 5% defibrinated sheep blood kolles which were grown for 3 days in an anaerobic atmosphere to produce this lot. Quality control testing was completed under propagation conditions unless otherwise noted.

Note: Quality control of HMP material is only performed to demonstrate that the material distributed by BEI Resources is identical to the deposited material. It should not be considered a complete characterization of the deposited organism.

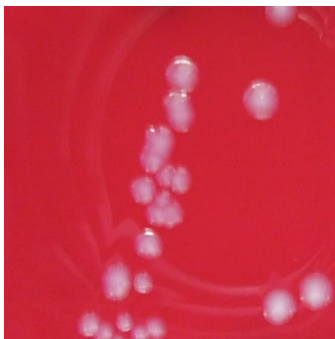
**Lot: 70059645**

**Manufacturing Date: 13FEB2023**

TEST	SPECIFICATIONS	RESULTS
<b>Phenotypic Analysis</b> Cellular morphology <sup>1</sup> Colony morphology  Motility (wet mount)	Gram-negative rods Report results  Report results	Gram-negative rods Circular, convex, entire, smooth and gray (Figure 1) Non-motile
<b>Genotypic Analysis</b> Sequencing of 16S ribosomal RNA gene (1420 base pairs)	≥ 99% sequence identity to <i>P. vulgatus</i> , strain CL09T03C04 (GenBank: AGXZ01000031.1)	99.7% sequence identity to <i>P. vulgatus</i> , strain CL09T03C04 (GenBank: AGXZ01000031.1) <sup>2</sup>
<b>Purity (post-freeze)</b> Anaerobic 7 days at 37°C on Tryptic Soy agar with 5% defibrinated sheep blood Aerobic with 5% CO <sub>2</sub> 7 days at 37°C on Tryptic Soy agar with 5% defibrinated sheep blood	Growth consistent with expected colony morphology  No growth	Growth consistent with expected colony morphology  No growth
<b>Viability (post-freeze)</b>	Growth	Growth

<sup>1</sup>Cellular morphology depends upon the conditions of growth; *P. vulgatus* cells generally appear as oval bacilli but may be quite pleomorphic with swellings, vacuoles or distortion. For additional information, please refer to Eggerth, A. H. and B. H. Gagnon. "The Bacteroides of Human Feces." J. Bacteriol. 25 (1933): 389-413.

<sup>2</sup>Also consistent with other *Phocaeicola* sp.

**Figure 1: Colony Morphology**

/Sonia Bjorum Brower/  
Sonia Bjorum Brower

Lead Technical Writer or designee, ATCC Federal Solutions

22 FEB 2024

ATCC®, on behalf of BEI Resources, hereby represents and warrants that the material provided under this certificate has been subjected to the tests and procedures specified and that the results described, along with any other data provided in this certificate, are true and accurate to the best of ATCC®'s knowledge.

ATCC® is a trademark of the American Type Culture Collection.

You are authorized to use this product for research use only. It is not intended for human use.

