

**H5 Hemagglutinin (HA) Protein from Influenza A Virus, A/bald eagle/Florida/W22-134-OP/2022 (H5N1), Recombinant from Baculovirus**

**Catalog No. NR-59424**

This reagent is the tangible property of the U.S. Government.

**Product Description:**

A recombinant form of the H5 Hemagglutinin (HA) Protein from Influenza A Virus, A/bald eagle/Florida/W22-134-OP/2022 (H5N1), was produced in Sf9 insect cells using a baculovirus expression system. The recombinant ectodomain of the HA protein was purified by ion exchange and affinity chromatography. This item was manufactured and subjected to quality control testing by St. Jude Children’s Research Hospital (SJCRH), Memphis, Tennessee, USA.

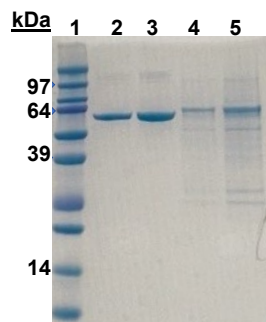
**Lot: 70062084**

**Manufacturing Date: 14MAR2023**

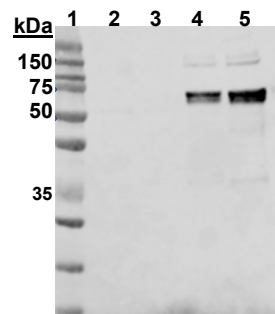
TEST	SPECIFICATIONS	RESULTS
Appearance	Report results	Opalescent
SDS-PAGE Analysis	Report results	Major band of ~68 kDa (Figure 1)
Identification by Western Blot Analysis <sup>1</sup>	Reactive	Reactive (Figure 2)
Concentration by Bicinchoninic Acid Assay Bovine Serum Albumin (BSA; standard)	Report results	0.7 mg/mL
<b>Final Product</b> Amount per vial Volume per vial	Report results Report results	140 µg 0.2 mL
<b>Functional Activity</b> Hemagglutination activity using 0.5% turkey red blood cells	Report results	Positive (1:128)
<b>Filtration</b>	0.2 µm sterile-filtered	0.2 µm sterile-filtered
<b>Endotoxin</b>	Report results	≤ 0.5 EU/mL

<sup>1</sup>Using a 1:2000 dilution of anti-H5 polyclonal goat antiserum G. 19931 (2016) [against A/snow goose/Missouri/cc15-84A/2015 (H5N2) influenza virus] as primary antibody.

**Figure 1: SDS-PAGE Analysis**



**Figure 2: Western Blot Analysis**



Lane 1: Molecular weight markers  
 Lane 2: BSA (1.0 µg)  
 Lane 3: BSA (2.5 µg)  
 Lane 4: NR-59424 (1.0 µg)  
 Lane 5: NR-59424 (2.0 µg)

/Sonia Bjorum Brower/

Sonia Bjorum Brower

26 SEP 2023

Technical Manager or designee, ATCC Federal Solutions

ATCC®, on behalf of BEI Resources, hereby represents and warrants that the material provided under this certificate has been subjected by the contributor to the tests and procedures specified and that the results described, along with any other data provided in this certificate, are true and accurate to the best of ATCC®'s knowledge.

ATCC® is a trademark of the American Type Culture Collection.

You are authorized to use this product for research use only. It is not intended for human use.

