

**Rothia aeria, Oral Taxon 188 Strain F0474**

**Catalog No. HM-818**

**Product Description:**

*Rothia aeria* (*R. aeria*), Oral Taxon 188, strain F0474 was isolated from the saliva of a healthy 41-year-old female patient in the United States. HM-818 lot 70052115 was produced by inoculation of BEI Resources seed lot 61881794 into Brain Heart Infusion broth and incubated for 1 day at 37°C in an aerobic atmosphere. The material from the initial growth was passaged once in Tryptic Soy agar with 5% defibrinated sheep blood kolles for 1 day at 37°C in an aerobic atmosphere to produce this lot. Quality control testing was completed under propagation conditions unless otherwise noted.

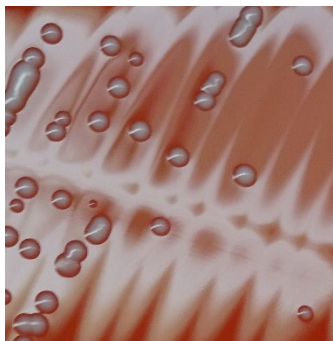
Note: Quality control of HMP material is only performed to demonstrate that the material distributed by BEI Resources is identical to the deposited material. It should not be considered a complete characterization of the deposited organism.

**Lot: 70052115**

**Manufacturing Date: 20APR2022**

TEST	SPECIFICATIONS	RESULTS
<b>Phenotypic Analysis</b> Cellular morphology Colony morphology  Motility (wet mount)	Gram-positive rods Report results  Report results	Gram-positive rods Circular, convex, entire, smooth and white (Figure 1)  Non-motile
<b>Genotypic Analysis</b> Sequencing of 16S ribosomal RNA gene (~ 1400 base pairs)	≥ 99% sequence identity to <i>R. aeria</i> Strain F0474 (GenBank: AJJQ01000002.1)	99.9% sequence identity to <i>R. aeria</i> Strain F0474 (GenBank: AJJQ01000002.1)
<b>Purity (post-freeze)</b> 7 days at 37°C in an aerobic atmosphere with and without 5% CO <sub>2</sub> on Tryptic Soy agar with 5% defibrinated sheep blood	Growth consistent with expected colony morphology	Growth consistent with expected colony morphology
<b>Viability (post-freeze)</b>	Growth	Growth

**Figure 1: Colony Morphology**



/Sonia Bjorum Brower/

Sonia Bjorum Brower

15 AUG 2022

Technical Manager or designee, ATCC Federal Solutions

ATCC®, on behalf of BEI Resources, hereby represents and warrants that the material provided under this certificate has been subjected to the tests and procedures specified and that the results described, along with any other data provided in this certificate, are true and accurate to the best of ATCC®'s knowledge.

ATCC® is a trademark of the American Type Culture Collection.

You are authorized to use this product for research use only. It is not intended for human use.

