

Genomic DNA from *Plasmodium falciparum*, Strain D10

Catalog No. MRA-201G

Product Description:

Genomic DNA was extracted from a preparation of *Plasmodium falciparum* (*P. falciparum*), strain D10. MRA-201G lot 70043127 was extracted from a cell culture of BEI Resources MRA-201 seed lot using proprietary technology and vialled in AE buffer (10 mM Tris-HCl and 0.5 mM EDTA, pH 9). Testing was completed on bulk material prior to freezing.

Lot: 70043127

Manufacturing Date: 23JUN2021

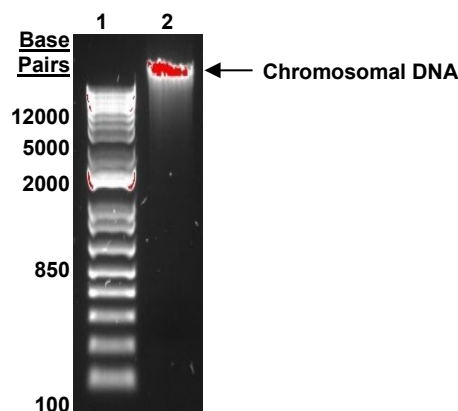
TEST	SPECIFICATIONS	RESULTS
Sequencing of Merozoite Surface Protein 2 (MSP2) gene (~ 790 base pairs)	Consistent with <i>P. falciparum</i>	Consistent with <i>P. falciparum</i>
Agarose Gel Electrophoresis	High molecular weight chromosomal DNA	High molecular weight chromosomal DNA (Figure 1)
Concentration by Nanodrop Measurement	Report results	~ 0.5 µg in 50 µL per vial (10 µg per mL)
Amount per Vial¹	Report results	~ 0.5 µg
Functional Activity by PCR Amplification MSP2 locus¹	~ 600 to 900 base pair amplicon	~ 800 base pair amplicon
OD₂₆₀/OD₂₈₀ Ratio	1.6 to 2.1	1.95
Protozoan Inactivation Human erythrocytes exposed to 10% of total yield of MRA-201G ^{2,3}	No parasitemia observed	No parasitemia observed
Mycoplasma Contamination DNA Detection by PCR	None detected	None detected

¹Primer sequences and conditions for PCR are available upon request.

²14 days in complete RPMI culture medium at 37°C in sealed flasks outgassed with blood-gas atmosphere (90% N₂, 5% CO₂, 5% O₂). Complete RPMI culture medium was changed and parasitemia checked every 3 to 4 days.

³An extraction procedure was used that has been shown to consistently inactivate 100% of *Plasmodium* parasites.

Figure 1: Agarose Gel Electrophoresis



Lane 1: Invitrogen™ TrackIt™ 1 Kb Plus DNA Ladder
Lane 2: ~ 110 ng of MRA-201G

/Heather Couch/

Heather Couch

12 AUG 2021

Program Manager or designee, ATCC Federal Solutions

ATCC®, on behalf of BEI Resources, hereby represents and warrants that the material provided under this certificate has been subjected to the tests and procedures specified and that the results described, along with any other data provided in this certificate, are true and accurate to the best of ATCC®'s knowledge.

ATCC® is a trademark of the American Type Culture Collection.
You are authorized to use this product for research use only. It is not intended for human use.

