

Genomic RNA from Influenza B Virus, B/Texas/06/2011 (Yamagata Lineage)

Catalog No. NR-45849

Product Description:

Genomic RNA was isolated from a preparation of pooled allantoic fluid from specific pathogen free (SPF) embryonated chicken eggs (10-day-old; Charles River, Norwich, Connecticut, USA) infected with influenza B Virus, B/Texas/06/2011 (Yamagata Lineage) (BEI Resources NR-44024 lot 63379479) using QIAamp® Viral RNA Mini Kit (Qiagen® 52906). The viral genomic RNA is in a background of cellular nucleic acid and carrier RNA.

Lot: 70036102

Manufacturing Date: 28AUG2020

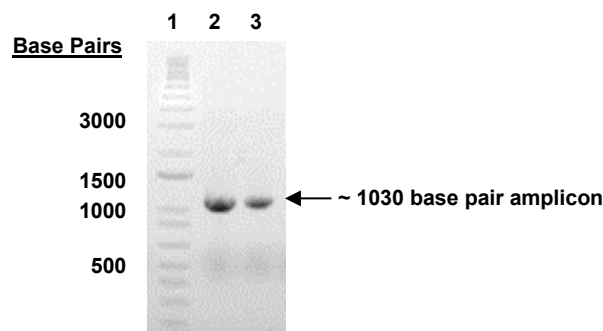
TEST	SPECIFICATIONS	RESULTS
Genotypic Analysis Sequencing of species-specific region (~ 920 nucleotides)	≥ 98% identity with B/Texas/06/2011 (Yamagata Lineage) (GenBank: KC813972.1)	99.7% identity with B/Texas/06/2011 (Yamagata Lineage) (GenBank: KC813972.1)
Functional Activity by RT-PCR Amplification¹ Hemagglutinin gene	~ 1030 base pair amplicon	~ 1030 base pair amplicon (Figure 1)
Estimated Concentration (post-dilution) by RiboGreen® Measurement (Viral, Cellular and Carrier)²	Report results	2.1 ng per 100 µL (21.4 µg per mL)
Estimated Amount per Vial²	Report Results	2.1 ng
Virus Inactivation 10% of total yield inoculated incubated in SPF embryonated chicken eggs and evaluated by hemagglutination assay ³	No viable virus detected	No viable virus detected

¹Amplified using iTaq™ Universal SYBR Green One-step Kit (Bio-Rad® 172-5151) with 5 µL of NR-45849 in a 50 µL reaction

²Measurement is determined pre-vial prior to dilution due to the limit of detection of the quantification method

³Use of the QIAamp® Viral RNA Mini Kit has been demonstrated to consistently inactivate 100% of influenza viruses as shown by hemagglutination assay.

Figure 1: Functional Activity of NR-45849 by RT-PCR Amplification of Hemagglutinin Gene



Lane 1: Invitrogen™ TrackIt™ 1 Kb Plus DNA Ladder
 Lane 2: Positive control
 Lane 3: PCR product from 10 µL of NR-45849

/Heather Couch/

Heather Couch

26 MAR 2021

Program Manager or designee, ATCC Federal Solutions

ATCC®, on behalf of BEI Resources, hereby represents and warrants that the material provided under this certificate has been subjected to the tests and procedures specified and that the results described, along with any other data provided in this certificate, are true and accurate to the best of ATCC®'s knowledge.

ATCC® is a trademark of the American Type Culture Collection.

You are authorized to use this product for research use only. It is not intended for human use.

