

Mycobacterium canettii* Phenolic Glycolipid (PGL)*Catalog No. NR-36510**

This reagent is the tangible property of the U.S. Government.

Product Description:

NR-36510 was produced from the total lipids of *Mycobacterium canettii*. Preparative TLC of the Folch-washed total lipid in chloroform/methanol (95:5, v/v) with scraping of individual bands and elution from silica using 2:1 chloroform/methanol yields PGL.

Lot: 70039202**Manufacturing Date: 24SEP2020**

Production and QC testing were performed by Colorado State University (CSU). The CSU production documentation for lot 20.MCa.9.23.01.PGL is attached.

ATCC[®], on behalf of BEI Resources, hereby represents and warrants that the material provided under this certificate has been subjected by the contractor to the tests and procedures specified and that the results described, along with any other data provided in this certificate, are true and accurate to the best of ATCC[®]'s knowledge.

ATCC[®] is a trademark of the American Type Culture Collection.

You are authorized to use this product for research use only. It is not intended for human use.



WORK SHEET FOR PHENOLIC GLYCOLIPID

General Information

BEI Catalog Number: NR-36510
CSU Lot Number: 20.Mca.9.23.01.PGL
Fraction Type: phenolic glycolipid
Species: *M. canetti*

Purification Information

Starting material: 2:1 TL Starting Material Lot #: 15.canetti.7.28.6.WCg.a
Cells Irradiated: Yes Viability Test Performed: No Viable Organism Detected
Protocol used (SOP #'s): PP038, SP005, SP031, SP032, SP033, SP037
Date started: 8/17/20
Date completed: 9/24/20
Notebook; page(s): Phenolic Glycolipid Notebook III pp 39-44

Additional notes: Preparatory TLC plates were loaded with Folch-washed total lipid and developed with 95/5 chloroform/methanol. Additional prep plates were ran for further clean-up.

Quality Control Information:

Total amount of PDIM : 9.2 mg MALDI-TOF completed: 9/23/20
TLC date: 9/21/20 Date dried on N₂ bath: 9/24/20
Notebook and page(s): Phenolic Glycolipid Notebook III pp 45-48

TLC Analysis:

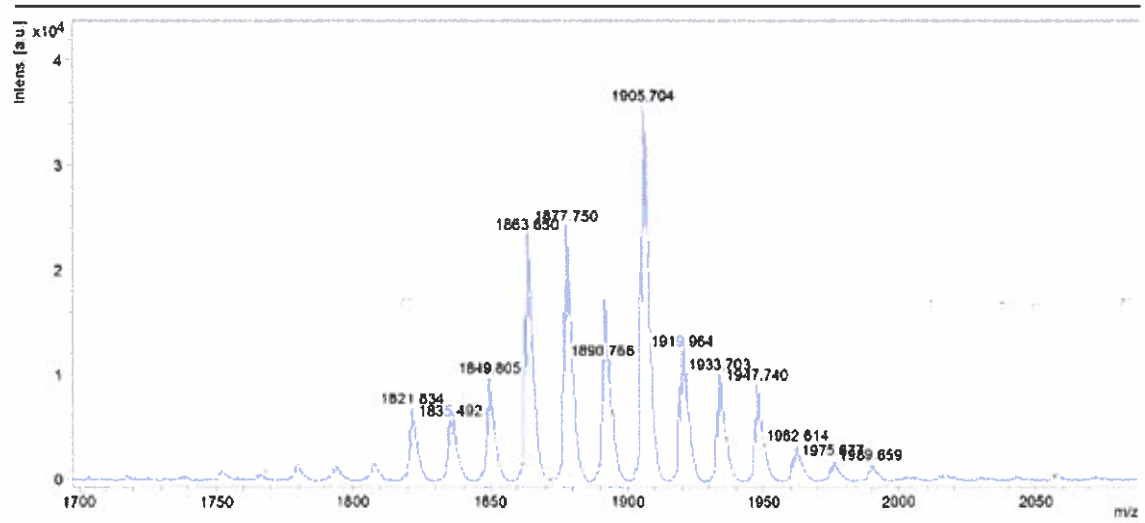


Loaded 25 μ g and developed in 95/5 chloroform/methanol.
Stained with α -naphthol.

Aliquot Information

$30 \times 0.25 \text{ mg} = 7.5 \text{ mg}$
 $1 \times 1.7 \text{ mg} = 1.7 \text{ mg}$
9.2 mg

QC MALDI-TOF:



Applied 2 µg 20.Mca.9.23.01.PGL overlaid with DHB matrix and analyzed in positive mode.

Dany Wilson 9/24/20
(Research Associate) date

C. McHaffey 9/25/20
(Laboratory Supervisor) date