

Genomic DNA from *Plasmodium falciparum*, Strain FC27/PNG

Catalog No. MRA-914G

Product Description:

Genomic DNA was extracted from a preparation of *Plasmodium falciparum* (*P. falciparum*), strain FC27/PNG (Papua New Guinea).

Lot: 70018499¹⁻³

Manufacturing Date: 03DEC2018

TEST	SPECIFICATIONS	RESULTS
Sequencing of Merozoite Surface Protein 2 (MSP2) gene (~ 750 base pairs)	Consistent with <i>P. falciparum</i>	Consistent with <i>P. falciparum</i>
Agarose Gel Electrophoresis	High molecular weight chromosomal DNA	High molecular weight chromosomal DNA (Figure 1)
Concentration by PicoGreen® Measurement	Report results	~ 0.5 µg in 45 µL per vial (11 µg/mL)
Amount per Vial	Report results	~ 0.5 µg
Functional Activity by PCR Amplification MSP2 locus ⁴	~ 600-900 base pair amplicon	~ 900 base pair amplicon
OD ₂₆₀ /OD ₂₈₀ Ratio	1.6 to 2.1	1.9
Protozoan Inactivation Human erythrocytes exposed to 10% of total yield of MRA-914G ^{5,6}	No parasitemia observed	No parasitemia observed
Mycoplasma Contamination DNA Detection by PCR	None detected	None detected

¹MRA-914G was produced from a cell culture of BEI Resources MR-MRA-914 lot 58591230. Genomic DNA was extracted using proprietary technology.

²MRA-914G lot 70018499 was vialled in AE buffer (10 mM Tris-HCl and 0.5 mM EDTA, pH 9).

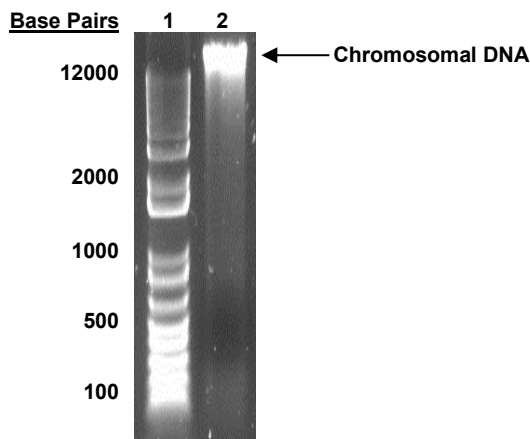
³Testing was completed on bulk material prior to freezing.

⁴Primer sequences and conditions for PCR are available upon request.

⁵14 days in complete RPMI culture medium at 37°C in sealed flasks outgassed with blood-gas atmosphere (90% N₂, 5% CO₂, 5% O₂). Complete RPMI culture medium was changed and parasitemia checked every 3 to 4 days.

⁶An extraction procedure was used that has been shown to consistently inactivate 100% of *Plasmodium* parasites.

Figure 1: Agarose Gel Electrophoresis



Lane 1: Invitrogen™ TrackIt™ 1 Kb Plus DNA Ladder
Lane 2: ~ 200 ng of MRA-914G

/Heather Couch/
Heather Couch

17 DEC 2019

Program Manager or designee, ATCC Federal Solutions

ATCC®, on behalf of BEI Resources, hereby represents and warrants that the material provided under this certificate has been subjected to the tests and procedures specified and that the results described, along with any other data provided in this certificate, are true and accurate to the best of ATCC®'s knowledge.

ATCC® is a trademark of the American Type Culture Collection.

You are authorized to use this product for research use only. It is not intended for human use.

