

**Genomic DNA from *Staphylococcus epidermidis*, Strain NIHLM039**

**Catalog No. HM-911D**

**Product Description:** Genomic DNA was extracted from a preparation of *Staphylococcus epidermidis* (*S. epidermidis*), strain NIHLM039.

**Lot<sup>1,2</sup>: 70018150**

**Manufacturing Date: 09NOV2018**

TEST	SPECIFICATIONS	RESULTS
<b>Genotypic Analysis</b> Sequencing of 16S ribosomal RNA gene (~ 1440 base pairs)	≥ 99% sequence identity to <i>S. epidermidis</i> , strain NIHLM039 (GenBank: AKGS01000044.1)	100% sequence identity to <i>S. epidermidis</i> , strain NIHLM039 (GenBank: AKGS01000044.1) <sup>3</sup>
<b>Agarose Gel Electrophoresis</b>	High molecular weight chromosomal DNA	High molecular weight chromosomal DNA (Figure 1)
<b>Concentration by PicoGreen® Measurement</b>	0.7 to 1.5 µg in 25 to 100 µL per vial	1.1 µg in 76 µL per vial (14 µg/mL)
<b>Amount per vial</b>	0.7 to 1.5 µg	1.1 µg
<b>Functional Activity by PCR Amplification</b> 16S ribosomal RNA gene	~ 1500 base pair amplicon	~ 1500 base pair amplicon
<b>OD<sub>260</sub>/OD<sub>280</sub> Ratio</b>	1.7 to 2.1	1.9
<b>Bacterial Inactivation</b> 10% of total yield plated on agar <sup>4,5</sup>	No viable bacteria detected	No viable bacteria detected

<sup>1</sup>Quality control of HMP organisms used for DNA extraction is only performed to demonstrate that the material produced by BEI Resources is identical to the deposited material. It should not be considered a complete characterization of the deposited organism.

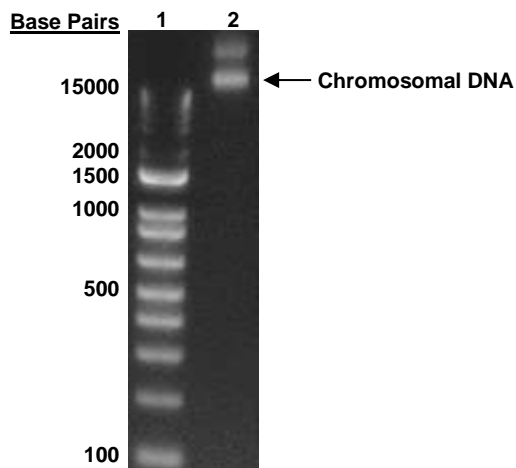
<sup>2</sup>The bacterial preparation used for extraction of genomic DNA was produced by culture of HM-911 lot 63479492. Genomic DNA was extracted using proprietary technology.

<sup>3</sup>Also consistent with other *Staphylococcus* species

<sup>4</sup>14 days at 37°C in an aerobic atmosphere on Tryptic Soy agar with 5% defibrinated sheep blood

<sup>5</sup>An extraction procedure was used that has been shown to consistently inactivate 100% of Gram-positive and Gram-negative bacteria.

**Figure 1: Agarose Gel Electrophoresis**



Lane 1: Invitrogen™ TrackIt™ 1 Kb Plus DNA Ladder  
Lane 2: 200 ng of HM-911D

/Heather Couch/

Heather Couch

29 MAR 2019

Program Manager or designee, ATCC Federal Solutions

ATCC<sup>®</sup>, on behalf of BEI Resources, hereby represents and warrants that the material provided under this certificate has been subjected by ATCC<sup>®</sup> to the tests and procedures specified and that the results described, along with any other data provided in this certificate, are true and accurate to the best of ATCC<sup>®</sup>'s knowledge.

ATCC<sup>®</sup> is a trademark of the American Type Culture Collection.

You are authorized to use this product for research use only. It is not intended for human use.

