

***Borrelia burgdorferi*, Strain B31 (Clone 5A2)**

Catalog No. NR-13252

Product Description: *Borrelia burgdorferi* (*B. burgdorferi*), strain B31 (clone 5A2) was derived from the original B31 strain. Clone 5A2 lacks linear plasmids lp5, lp28-1 and lp56 and circular plasmid cp9 of the parent B31 strain.

Lot¹: 70021458

Manufacturing Date: 26DEC2018

TEST	SPECIFICATIONS	RESULTS
Phenotypic Analysis Cellular morphology ² Motility (wet mount)	Spirochete Report results	Spirochete Motile
Genotypic Analysis Sequencing of 16S ribosomal RNA gene (~ 1410 base pairs)	≥ 99% sequence identity to <i>B. burgdorferi</i> type strain (GenBank: AE000793)	99.7% sequence identity to <i>B. burgdorferi</i> type strain (GenBank: AE000793) ³
Purity (post-freeze) Tryptic Soy agar with 5% defibrinated sheep blood ⁴	Growth consistent with expected colony morphology or no growth	No growth
Viability (post-freeze) Visual observation LIVE/DEAD [®] BacLight™ Bacterial Viability	Growth Green fluorescence visible	Non-turbid growth ² Green fluorescence visible (Figure 1) ⁵

¹NR-13252 lot 70021458 was produced by inoculation of BEI Resources NRS-13252 lot 59535352 into Revised Barbour-Stoener-Kelly broth and grown for 12 days at 32°C in a microaerophilic atmosphere to produce this lot.

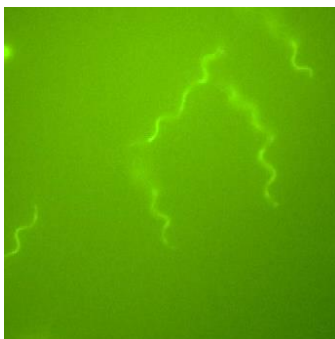
²6 days at 32°C in a microaerophilic atmosphere in Revised Barbour-Stoener-Kelly broth

³Also consistent with other *Borrelia* species

⁴Purity of this lot was assessed for 7 days at 37°C in an aerobic atmosphere with 5% CO₂.

⁵Determined after 6-day incubation at 32°C in a microaerophilic atmosphere in Revised Barbour-Stoener-Kelly medium with LIVE/DEAD[®] BacLight™ Bacterial Viability Kit, 100x magnification (Invitrogen™ L34856). Cells with a compromised membrane that are dead or dying will stain red, while cells with an intact membrane will stain green.

Figure 1: LIVE/DEAD[®] BacLight™ Bacterial Viability



/Heather Couch/

Heather Couch

Program Manager or designee, ATCC Federal Solutions

08 FEB 2019

ATCC[®], on behalf of BEI Resources, hereby represents and warrants that the material provided under this certificate has been subjected to the tests and procedures specified and that the results described, along with any other data provided in this certificate, are true and accurate to the best of ATCC[®]'s knowledge.

ATCC[®] is a trademark of the American Type Culture Collection.

You are authorized to use this product for research use only. It is not intended for human use.

