

***Mycobacterium canetti* Phenolic Glycolipid (PGL)****Catalog No. NR-36510**

This reagent is the tangible property of the U.S. Government.

**Product Description:** NR-36510 was produced from the total lipids of *Mycobacterium canetti*. Preparative TLC of the Folch-washed total lipid in chloroform/methanol (95:5, v/v) with scraping of individual bands and elution from silica using 2:1 chloroform/methanol yields PGL.

**Lot: 61131530****Manufacturing Date: 14AUG2012**

Production and QC testing were performed by Colorado State University (CSU). The CSU documentation for lot 12.Mca.8.13.01.PGL is attached.

ATCC®, on behalf of BEI Resources, hereby represents and warrants that the material provided under this certificate has been subjected by the contractor to the tests and procedures specified and that the results described, along with any other data provided in this certificate, are true and accurate to the best of ATCC®'s knowledge.

ATCC® is a trademark of the American Type Culture Collection.

You are authorized to use this product for research use only. It is not intended for human use.



## WORK SHEET FOR PHENOLIC GLYCOLIPID

### General Information

Lot Number: 12.Mca.8.13.01.PGL

Species: *M. canetti*

### Purification Information

Starting material: 2:1 chloroform/methanol-extracted total lipid Jun 2012

Lot number: Whole Cells 12.canetti.4.25.4.WCg

Protocol used (SOP #'s): PP038, SP005, SP031, SP032, SP033, SP037

Date started: 6/22/12

Date completed: 8/14/12

Notebook; page(s): PGL Notebook 2 pp 87-100

Additional notes: Preparatory TLC plates were loaded with Folch-washed total lipid and developed with 95/5 chloroform/methanol. Additional prep plates were run for further clean-up.

### Quality Control Information

Total volume: 2.4 ml

Total amount of PGL: 6.0 mg

Date dried on N<sub>2</sub> bath: 8/13/12

Notebook and page(s): PGL Notebook 2 pp 101-102 TLC date: 8/13/12 MALDI-TOF date: 8/14/12

### QC TLC



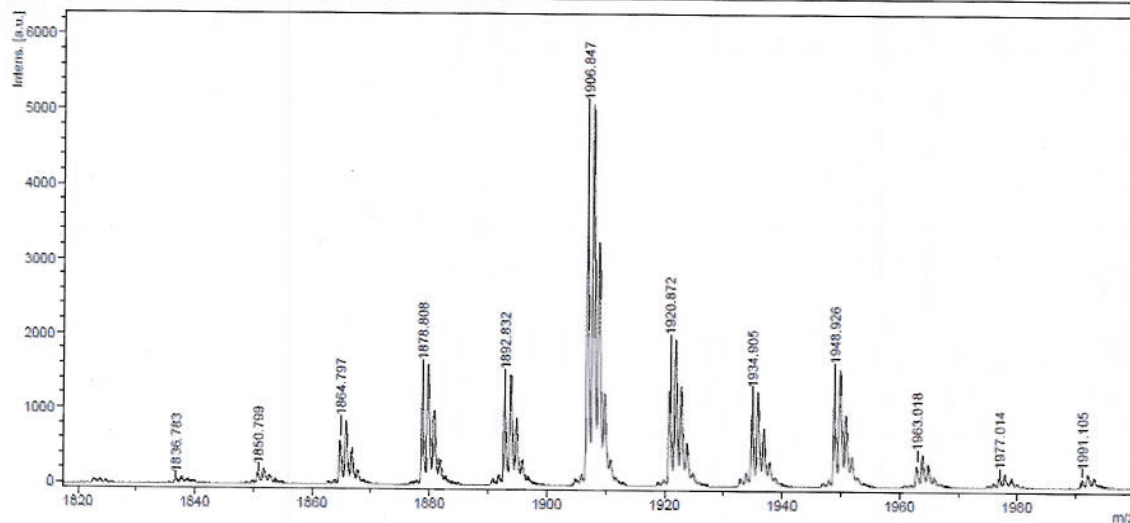
Developed 25 ug PGL in 95/5 chloroform/methanol and visualized with  $\alpha$ -naphthol.

### Aliquot Information

24 x 0.25 mg = 6.0 mg

**MALDI-TOF**

PGL (phenolic glycolipid)



Mixed 1.0  $\mu$ l PGL sample at 2.5 mg/ml in 2:1  $\text{CHCl}_3/\text{CH}_3\text{OH}$  with 1.0  $\mu$ l DHB matrix, and analyzed in positive electrospray mode.

*Dany Cojocari*  
\_\_\_\_\_  
(Research Associate)

8/14/12  
\_\_\_\_\_  
date

*[Signature]*  
\_\_\_\_\_  
(Laboratory Supervisor)

8/14/2012  
\_\_\_\_\_  
date