

**Monoclonal Anti-*Toxoplasma gondii* Micronemal Protein 3, Clone T4 2F3 (produced *in vitro*)**

**Catalog No. NR-50261**

**Product Description:** Antibody Class: IgG2ak

Mouse monoclonal antibody prepared against the micronemal protein 3 (MIC3) of *Toxoplasma gondii* (*T. gondii*) clone T4 2F3 was purified from the hybridoma supernatant by protein G affinity chromatography.

**Lot<sup>1</sup>: 70002323**

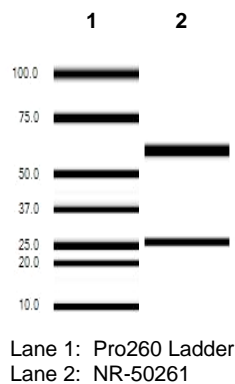
**Manufacturing Date: 23MAY2017**

TEST	SPECIFICATIONS	RESULTS
<b>Antibody Class Determination</b>	IgG2ak	IgG2ak
<b>Experion Pro260 Analysis</b> Average Purity	Correct molecular weight (MW) for heavy and light chains Report results	Correct MW for heavy and light chains (Figure 1) 99.0% pure
<b>Concentration by Spectrophotometer at OD<sub>280</sub></b>	≥ 1.0 mg per mL	1.5 mg per mL
<b>Functional Activity by Immunofluorescence Assay<sup>2</sup></b> <i>T. gondii</i> infected human skin fibroblast cells with NR-50261  <i>T. gondii</i> infected human skin fibroblast cells with FITC-conjugated goat anti-mouse IgG	Reactive  Nonreactive	Reactive; apical region specific staining consistent with micronemes (Figure 2) Nonreactive; no specific staining of parasites
<b>Sterility</b>	0.22 µm filter-sterilized	0.22 µm filter-sterilized

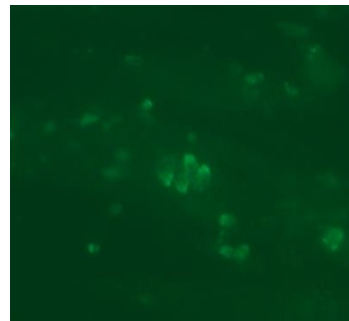
<sup>1</sup>Mouse monoclonal antibody was purified using protein G affinity chromatography from supernatants obtained from mouse hybridoma clone T4 2F3 adapted to serum-free media.

<sup>2</sup>Specific labeling of *T. gondii* cells with NR-50261 and FITC was observed after infection of human skin fibroblast cells (ATCC® CRL-1634™) with *T. gondii* (ATCC® PRA-310™). NR-50261 was used at a dilution of 1:500, followed by FITC-conjugated goat anti-mouse IgG (Invitrogen® A16073) as secondary antibody (1:2000).

**Figure 1: Experion Pro260 Analysis**



**Figure 2: Immunofluorescence Assay of *T. gondii* Infected Fibroblast Cells**



12 MAR 2018

Program Manager or designee, ATCC Federal Solutions

ATCC®, on behalf of BEI Resources, hereby represents and warrants that the material provided under this certificate has been subjected to the tests and procedures specified and that the results described, along with any other data provided in this certificate, are true and accurate to the best of ATCC®'s knowledge.

ATCC® is a trademark of the American Type Culture Collection.

You are authorized to use this product for research use only. It is not intended for human use.

