

**Monoclonal Anti-*Toxoplasma gondii* ROP1 Protein, Clone T5 2A3 (produced *in vitro*)**

**Catalog No. NR-50262**

**Product Description:** Antibody Class: IgG3 $\lambda$

Mouse monoclonal antibody prepared against the rhostry protein, ROP1, of *Toxoplasma gondii* (*T. gondii*) clone T5 2A3 was purified from the hybridoma supernatant by protein G affinity chromatography.

**Lot<sup>1</sup>: 70002325**

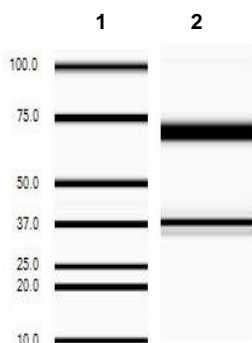
**Manufacturing Date: 04APR2017**

TEST	SPECIFICATIONS	RESULTS
<b>Antibody Class Determination</b>	Report results	IgG3 $\lambda$
<b>Experion Pro260 Analysis</b> Average Purity	Correct molecular weight (MW) for heavy and light chains Report results	Correct molecular weight (MW) for heavy and light chains (Figure 1) 96.8% pure
<b>Concentration by Spectrophotometer at OD<sub>280</sub></b>	≥ 1.0 mg per mL	1.0 mg per mL
<b>Functional Activity by Immunofluorescence Assay<sup>2</sup></b> <i>T. gondii</i> infected human skin fibroblast cells with NR-50262 <i>T. gondii</i> infected human skin fibroblast cells with FITC-conjugated goat anti-mouse IgG	Reactive Nonreactive	Reactive; staining of apical region where rhotries localize (Figure 2) Nonreactive; no specific staining of parasites
<b>Sterility</b>	0.22 $\mu$ m filter-sterilized	0.22 $\mu$ m filter-sterilized

<sup>1</sup>Mouse monoclonal antibody was purified using protein G affinity chromatography from supernatants obtained from mouse hybridoma clone T5 2A3 adapted to serum-free media.

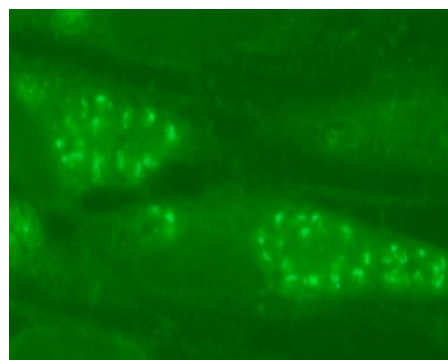
<sup>2</sup>Specific labeling of *T. gondii* cells with NR-50262 and FITC was observed after infection of human skin fibroblast cells (ATCC<sup>®</sup> CRL-1634<sup>™</sup>) with *T. gondii* (ATCC<sup>®</sup> PRA-310<sup>™</sup>). NR-50262 was used at a dilution of 1:500, followed by FITC-conjugated goat anti-mouse IgG (Invitrogen<sup>®</sup> A16073) as secondary antibody (1:2000).

**Figure 1: Experion Pro260 Analysis**



Lane 1: Pro260 Ladder  
Lane 2: NR-50262

**Figure 2: Immunofluorescence Assay of *T. gondii* Infected Fibroblast Cells**



## Certificate of Analysis for NR-50262

**Date:** 19 SEP 2017

**Signature:**



BEI Resources Authentication

ATCC®, on behalf of BEI Resources, hereby represents and warrants that the material provided under this certificate has been subjected to the tests and procedures specified and that the results described, along with any other data provided in this certificate, are true and accurate to the best of ATCC®'s knowledge.

ATCC® is a trademark of the American Type Culture Collection.

You are authorized to use this product for research use only. It is not intended for human use.

