

***Streptococcus pyogenes*, Strain H293 (Genotype *emm89*)**

Catalog No. NR-50135

Product Description: *Streptococcus pyogenes* (*S. pyogenes*), strain H293, genotype *emm89*, was isolated in 1995 from the muscle of a patient with necrotizing fasciitis in England.

Lot¹: 2218

Manufacturing Date: 03NOV2016

TEST	SPECIFICATIONS	RESULTS
Phenotypic Analysis Cellular morphology Colony morphologies ^{2,3} Hemolysis on blood agar ² Motility (wet mount) Biochemical tests: Catalase VITEK [®] MS (MALDI-TOF)	Gram-positive cocci Report results Report results Non-motile Negative Consistent with <i>S. pyogenes</i>	Gram-positive cocci Colony type 1: Circular, flat, entire, opaque and cream (Figure 1) Colony type 2: Circular, convex, entire, smooth and white (Figure 1) β-hemolytic Non-motile Negative <i>S. pyogenes</i> (99.9%)
Genotypic Analysis Sequencing of 16S ribosomal RNA gene (~ 1480 base pairs)	≥ 99% sequence identity to <i>S. pyogenes</i> , strain H293 (GenBank: HG316453)	100% sequence identity to <i>S. pyogenes</i> , strain H293 (GenBank: HG316453)
Purity (post-freeze)⁴	Growth consistent with expected colony morphology	Growth consistent with expected colony morphology
Viability (post-freeze)²	Growth	Growth

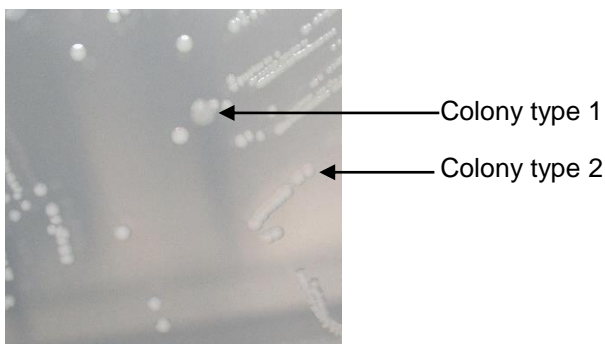
¹NR-50135 was produced by inoculation of the deposited material into Tryptic Soy broth and incubated for 1 day at 37°C in an aerobic atmosphere with 5% CO₂. Broth inoculum was added to Tryptic Soy agar kolles, which were grown for 1 day at 37°C in an aerobic atmosphere with 5% CO₂ to produce this lot.

²1 day at 37°C in an aerobic atmosphere with 5% CO₂ on Tryptic Soy agar

³Two colony types were observed. VITEK[®] MS (MALDI-TOF) analysis identified cells from both colony types as *S. pyogenes*. The 16S ribosomal RNA gene of each colony type was sequenced and found to have 100% sequence identity with the other colony type and *S. pyogenes*, strain H293 (GenBank: HG316453)

⁴Purity of this lot was assessed for 7 days at 37°C in an aerobic atmosphere with 5% CO₂ on Tryptic Soy agar with 5% defibrinated sheep blood.

Figure 1: Colony Morphology



Date: 07 APR 2017

Signature:



BEI Resources Authentication

ATCC®, on behalf of BEI Resources, hereby represents and warrants that the material provided under this certificate has been subjected to the tests and procedures specified and that the results described, along with any other data provided in this certificate, are true and accurate to the best of ATCC®'s knowledge.

ATCC® is a trademark of the American Type Culture Collection.

You are authorized to use this product for research use only. It is not intended for human use.

