

**Monoclonal Anti-*Francisella tularensis* Intracellular Growth Locus, Subunit B (IglB) Protein, Clone IglB1 (produced *in vitro*)**

**Catalog No. NR-3195**

**Product Description:** Antibody Class: IgG1

Mouse monoclonal antibody specific to a histidine-tagged recombinant form of the intracellular growth locus, subunit B protein (IglB) of *Francisella tularensis* (*F. tularensis*) was produced *in vitro*.

**Lot<sup>1</sup>: 7589617**

**Manufacturing Date: 05JAN2007**

TEST	SPECIFICATIONS	RESULTS
Estimated Monoclonal Antibody Concentration <sup>2</sup>	Report results	0.5 to 2 mg/mL
<b>Functional Activity</b> Western Blot using whole cell antigen (see Figure 1) <sup>3,4</sup> <i>F. tularensis</i> wild type (WT) <i>F. tularensis</i> WT, grown under low-iron conditions <i>F. tularensis</i> $\Delta$ iglB mutant Western Blot titer <i>F. tularensis</i> WT ELISA titer <i>F. tularensis</i> WT Indirect Fluorescent Antibody Assay <i>F. tularensis</i> WT, methanol-treated <i>F. tularensis</i> WT, formaldehyde-treated	Reactive Reactive Not reactive  Report results  Report results  Report results Report results	Reactive Reactive Not reactive  1:4000  1:64000  Fluorescence observed Fluorescence observed

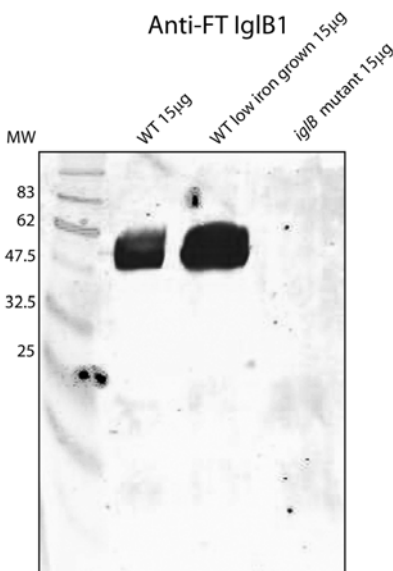
<sup>1</sup>Produced using a two-compartment disposable bioreactor (CELLine CL 1000) from INTEGRA Biosciences.

<sup>2</sup>In a background of Dulbecco's Modified Eagle's Medium supplemented with 5% fetal bovine serum.

<sup>3</sup>Visualized using a LI-COR<sup>®</sup> Biosciences Odyssey<sup>®</sup> Infrared Imaging System.

<sup>4</sup>Dilutions of NR-3195 between 1:200 and 1:1000 are recommended.

**Figure 1**



**Date:** 11 JUL 2007

**Signature:** Signature on File

**Title:** Technical Manager, BEI Authentication or designee

ATCC<sup>®</sup>, on behalf of BEI Resources, hereby represents and warrants that the material provided under this certificate has been subjected by the depositor to the tests and procedures specified and that the results described, along with any other data provided in this certificate, are true and accurate to the best of ATCC<sup>®</sup>'s knowledge.

ATCC<sup>®</sup> is a trademark of the American Type Culture Collection.

You are authorized to use this product for research use only. It is not intended for human use.