

***Clostridium difficile*, Isolate 20110999**

Catalog No. NR-49286

Product Description: *Clostridium difficile* (*C. difficile*), isolate 20110999 was obtained from the stool of an elderly female patient with a healthcare-associated (HA) *C. difficile* infection in western/midwestern USA in 2011. Isolate 20110999 was deposited as PCR ribotype 027, North American pulsed-field gel electrophoresis type 1 (NAP1), containing *tcdA*, *tcdB* and *tcdC* (with 18 base pair deletion) of the PaLoc operon as well as the *C. difficile* binary toxin (CDT).

Lot¹: 63719793

Manufacturing Date: 02SEP2015

TEST	SPECIFICATIONS	RESULTS
Phenotypic Analysis Cellular morphology Colony morphology ² Hemolysis ² Motility (wet mount) Biochemical tests: Esculin hydrolysis ³ Gelatin hydrolysis ³ VITEK [®] MS (MALDI-TOF)	Gram-positive rods Report results Non-hemolytic Report results Positive Positive <i>C. difficile</i>	Gram-positive rods Irregular, slight peaked, undulate, opaque and gray (Figure 1) Non-hemolytic Motile Positive Positive <i>C. difficile</i> (99.9%)
Genotypic Analysis Sequencing of 16S ribosomal RNA gene (~ 1400 base pairs)	> 99% sequence identity to <i>C. difficile</i> type strain	99.9% sequence identity to CP011968.1 (ATCC [®] 9689™)
PCR Assay of Extracted DNA Presence of <i>C. difficile</i> -specific genes ⁴ Triose phosphate isomerase (<i>tpi</i>) Presence of toxin genes ^{4,5} <i>cdtB</i> <i>tcdA</i> (wild type) <i>tcdA</i> (partial deletion) <i>tcdB</i>	~ 230 base pair amplicon ~ 510 base pair amplicon ~ 370 base pair amplicon No amplicon ~ 160 base pair amplicon	~ 230 base pair amplicon ~ 510 base pair amplicon ~ 370 base pair amplicon No amplicon ~ 160 base pair amplicon
Purity (post-freeze) Anaerobic growth ⁶ Aerobic growth ⁷	Growth consistent with expected colony morphology No growth	Growth consistent with expected colony morphology No growth
Viability (post-freeze)²	Growth	Growth

¹NR-49286 was produced by inoculation of the deposited material into Modified Reinforced Clostridial medium and incubated for 1 day at 37°C in an anaerobic atmosphere (< 0.5% O₂; Remel™ Anaero Pack-Anaero™ R681001). The material from the initial growth was passaged in Modified Reinforced Clostridial medium for 1 day at 37°C in an anaerobic atmosphere to produce this lot.

²2 days at 37°C in an anaerobic atmosphere on Tryptic Soy agar with 5% defibrinated sheep blood

³Tests were assessed after 7 days at 37°C in an anaerobic atmosphere. The gelatin tube was placed at 4°C for one hour prior to result determination.

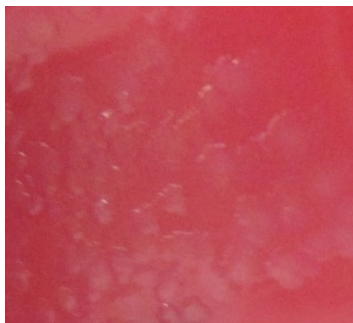
⁴Lemee, L., et al. "Multiplex PCR Targeting *tpi* (Triose Phosphate Isomerase), *tcdA* (Toxin A), and *tcdB* (Toxin B) Genes for Toxigenic Culture of *Clostridium difficile*." *J. Clin. Microbiol.* 42 (2004): 5710-5714. PubMed: 15583303.

⁵Antikainen, J., et al. "Detection of Virulence Genes of *Clostridium difficile* by Multiplex PCR." *APMIS*. 117 (2009): 607-613. PubMed: 19664132.

⁶Purity of this lot was assessed for 7 days at 37°C in an anaerobic atmosphere on Tryptic Soy agar with 5% defibrinated sheep blood.

⁷Purity of this lot was assessed for 7 days at 37°C in an aerobic atmosphere with 5% CO₂ on Tryptic Soy agar with 5% defibrinated sheep blood.

Figure 1: Colony Morphology



Date: 17 FEB 2016

Signature:



BEI Resources Authentication

ATCC[®], on behalf of BEI Resources, hereby represents and warrants that the material provided under this certificate has been subjected to the tests and procedures specified and that the results described, along with any other data provided in this certificate, are true and accurate to the best of ATCC[®]'s knowledge.

ATCC[®] is a trademark of the American Type Culture Collection.

You are authorized to use this product for research use only. It is not intended for human use.

