

**Genomic RNA from Middle East Respiratory Syndrome Coronavirus (MERS-CoV), EMC/2012**

**Catalog No. NR-45843**

**Product Description:** Genomic RNA was isolated from a preparation of cell lysate and supernatant from Vero E6 (C1008) cells<sup>1</sup> infected with MERS-CoV, EMC/2012.

**Lot<sup>2</sup>: 62943527**

**Manufacturing Date: 04NOV2014**

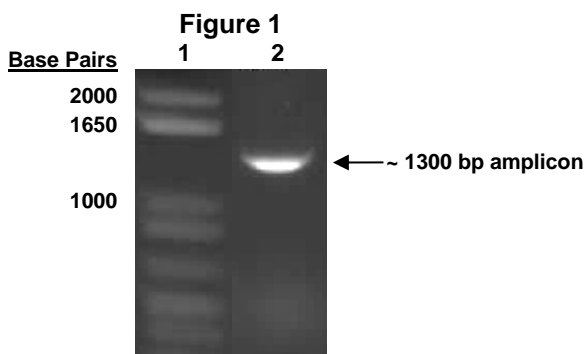
TEST	SPECIFICATIONS	RESULTS
<b>Sequencing of Species-Specific Region (1194 nucleotides)</b>	Consistent with MERS-CoV, EMC/2012  Consistent with NR-44260	100% identity with MERS-CoV, EMC/2012 (GenBank: JX869059) 100% identity with NR-44260
<b>Functional Activity by RT-PCR Amplification<sup>3</sup></b>	~ 1300 bp amplicon	~ 1300 bp amplicon (See Figure 1)
<b>Total RNA Content by RiboGreen<sup>®</sup> Measurement (Viral, Cellular and Carrier)</b>	Report results	4.3 ng per 100 µL
<b>Virus Inactivation</b> 10% of total yield inoculated on HEp-2 cells <sup>1</sup> and evaluated for cytopathic effect and viral RNA replication by RT-PCR <sup>4</sup>	No virus detected	No virus detected

<sup>1</sup>Vero E6 (C1008) cells: ATCC<sup>®</sup> CRL-1586<sup>™</sup>

<sup>2</sup>Nucleic acid was extracted from a preparation of MERS-CoV, EMC/2012 (BEI Resources NR-44260, Lot 62043787), using a QIAamp<sup>®</sup> Viral RNA Mini Kit (Qiagen 52906).

<sup>3</sup>Amplified using iTaq<sup>™</sup> Universal SYBR<sup>®</sup> Green One-Step RT-PCR Kit (Bio-Rad 172-5151) with 5 µL of NR-45843 in a 50 µL reaction

<sup>4</sup>Use of the QIAamp<sup>®</sup> Viral RNA Mini Kit has been demonstrated to consistently inactivate 100% of Middle East respiratory syndrome coronavirus, as shown by the absence of cytopathic effect (CPE) and failure to detect viral RNA replication by RT-PCR after plating the entire extract on virus-susceptible cells and blind passaging once.



**Date:** 16 NOV 2015

**Signature:** *Michael Q. Gynther*

BEI Resources Authentication

ATCC<sup>®</sup>, on behalf of BEI Resources, hereby represents and warrants that the material provided under this certificate has been subjected to the tests and procedures specified and that the results described, along with any other data provided in this certificate, are true and accurate to the best of ATCC<sup>®</sup>'s knowledge.

ATCC<sup>®</sup> is a trademark of the American Type Culture Collection.

You are authorized to use this product for research use only. It is not intended for human use.

