

## Ferret Orthologue of *Homo sapiens* EDD, Reverse Primer

### Catalog No. NR-8096

This reagent is the tangible property of the U.S. Government.

**Product Description:** NR-8096 pairs with NR-8095 to amplify the ferret (*Mustela putorius furo*) orthologue of *Homo sapiens* EDD (UBR5). EDD is a ubiquitin protein ligase E3 component n-recognin 5 (NCBI GeneID: 51366).

**Lot: 1022**

**Manufacturing Date: 03JUL2007**

| TEST  | SPECIFICATIONS                                     | RESULTS  |
|---|--|--|
| <b>PCR Amplification<sup>1</sup></b><br>Recommended primer concentration<br>Observed C <sub>T</sub><br>Product T <sub>m</sub> | Report results<br>Report results<br>Report results | 500 nM<br>24.5 (see Figure 1)<br>78.5°C (see Figure 2) |
| <b>Amplification and Sequence Verification<sup>2</sup></b>  | EDD  | EDD  |
| <b>Content (OD<sub>260</sub>)</b>   | Report results                                     | 1.20   |
| <b>Content (µg)</b>   | Report results                                     | 38.81  |
| <b>Content (pmol)</b>   | Report results                                     | 6015.87  |
| <b>Volume Needed for 100 µM Solution (µL)</b>   | Report results                                     | 60.16  |
| <b>Purity by HPLC</b>   | > 75%  | 92.50% (see Figure 3)                                  |

<sup>1</sup>Real-time PCR assay with a standard cDNA template derived from mitogen-activated ferret (*Mustela putorius furo*) PBMCs, splenocytes and lung tissue.

<sup>2</sup>The PCR product of the target gene was cloned into pCR<sup>®</sup>2.1-TOPO<sup>®</sup>. Plasmid DNA was sequenced using the M13 reverse primer. Sequence identities were verified by BLASTN analysis against the NCBI database.

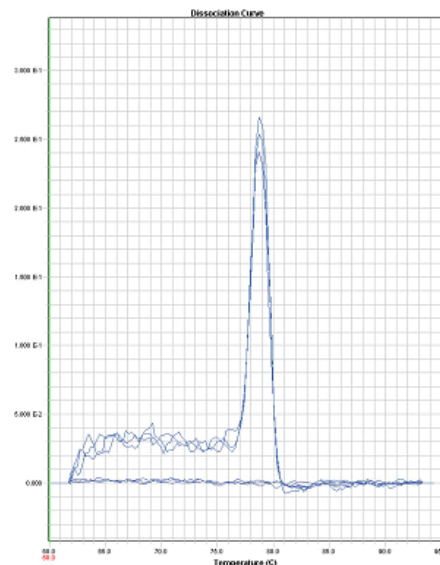
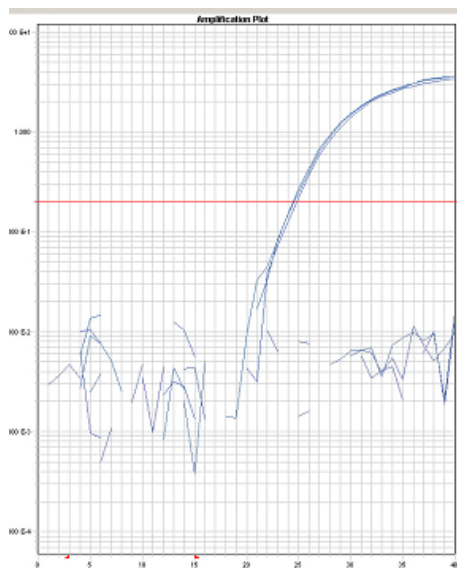


Figure 1. Amplicon amplification ( $\Delta R_h$  versus Cycle Number).

Figure 2. Amplicon dissociation (Derivative versus Temperature).

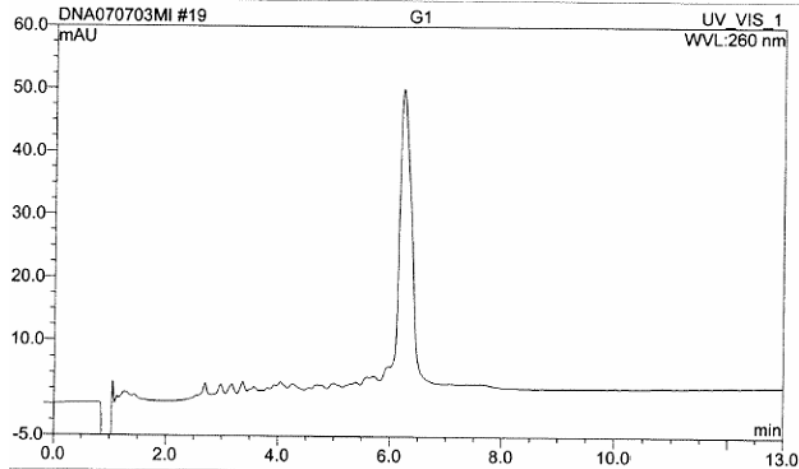


Figure 3. HPLC trace of purified oligonucleotide (Absorbance versus Elution Time).

**Date:** 20 DEC 2007

**Signature:** Signature on File

**Title:** Technical Manager, BEI Authentication or designee

ATCC®, on behalf of BEI Resources, hereby represents and warrants that the material provided under this certificate has been subjected by the contractor to the tests and procedures specified and that the results described, along with any other data provided in this certificate, are true and accurate to the best of ATCC®'s knowledge.

ATCC® is a trademark of the American Type Culture Collection.  
You are authorized to use this product for research use only. It is not intended for human use.

