

***Parabacteroides merdae*, Strain CL03T12C32**

Catalog No. HM-730

Product Description: *Parabacteroides merdae* (*P. merdae*), strain CL03T12C32 was isolated from healthy adult human feces in Boston, Massachusetts, USA.

Lot^{1,2}: 62170404

Manufacturing Date: 09NOV2013

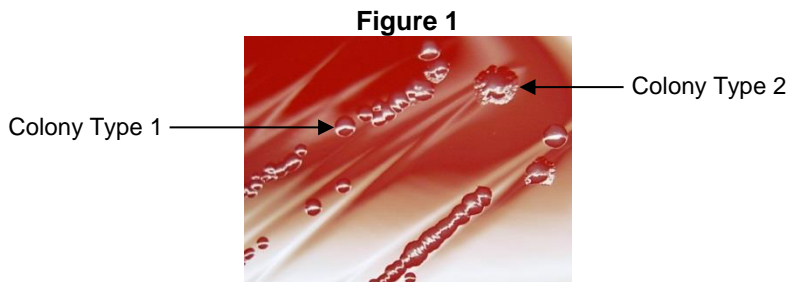
TEST	SPECIFICATIONS	RESULTS
Phenotypic Analysis Cellular morphology Colony morphologies ^{3,4} Motility (wet mount)	Gram-negative rods Report results Report results	Gram-negative rods Colony type 1: Circular, convex, entire, smooth and gray (Figure 1) Colony type 2: Circular, convex, undulate, smooth and gray (Figure 1) Non-motile
Genotypic Analysis Sequencing of 16S ribosomal RNA gene (~ 1470 base pairs)	≥ 99% identical to GenBank: AGZQ01000007 (<i>P. merdae</i> , strain CL03T12C32)	≥ 99% identical to GenBank: AGZQ01000007 (<i>P. merdae</i> , strain CL03T12C32)
Viability (post-freeze)⁴	Growth	Growth

¹Quality control of HMP material is only performed to demonstrate that the material distributed by BEI Resources is identical to the deposited material. It should not be considered a complete characterization of the deposited organism.

²*P. merdae*, strain CL03T12C32 was deposited by Laurie E. Comstock, PhD, Associate Microbiologist, Department of Medicine, Channing Laboratory, Brigham and Women's Hospital, Harvard Medical School, Boston, Massachusetts. HM-730 was produced by inoculation of the deposited material on Tryptic Soy agar with 5% defibrinated sheep blood and incubated for 68 hours at 37°C in an anaerobic atmosphere (80% N2:20% CO2). Cells were then suspended in Modified Chopped Meat medium and the suspension was added to Tryptic Soy agar with 5% defibrinated sheep blood kolles which were grown for 52 hours at 37°C in an anaerobic atmosphere. Purity of this lot was assessed for 7 days under propagation conditions.

³Two colony types were observed when plated on Tryptic Soy agar with 5% defibrinated sheep blood for 73 hours at 37°C in an anaerobic atmosphere. Attempts to isolate the individual colony types revealed that they reverted to a single colony type (colony type 1).

⁴73 hours at 37°C and anaerobic atmosphere on Tryptic Soy agar with 5% defibrinated sheep blood



Date: 07 MAR 2014

Signature:

Title:

Technical Manager, BEI Authentication or designee

ATCC®, on behalf of BEI Resources, hereby represents and warrants that the material provided under this certificate has been subjected to the tests and procedures specified and that the results described, along with any other data provided in this certificate, are true and accurate to the best of ATCC®'s knowledge.

ATCC® is a trademark of the American Type Culture Collection.

You are authorized to use this product for research use only. It is not intended for human use.

