

Polyclonal Anti-*Mycobacterium tuberculosis* ESAT6 (Gene Rv3875) (antiserum, Rabbit)**Catalog No. NR-13803**

This reagent is the tangible property of the U.S. Government.

Product Description:

Antibody Designation: α -ESAT6

Polyclonal antiserum to ESAT6 (Early Secretory Antigenic Target ESXA, Gene Rv3875) of *Mycobacterium tuberculosis*, strain H37Rv was produced in rabbits. The antiserum is reported to be active in ELISA and Western Blot assays.

Lot: 60984656**Manufacturing Date: 10MAY2012**

QC testing was performed by Colorado State University under the TB Vaccine Testing and Research Materials Contract (NIH). The Colorado State University documentation for lot 12.ESAT6.3.19.6.rp is attached.

ATCC[®], on behalf of BEI Resources, hereby represents and warrants that the material provided under this certificate has been subjected by the contractor to the tests and procedures specified and that the results described, along with any other data provided in this certificate, are true and accurate to the best of ATCC[®]'s knowledge.

ATCC[®] is a trademark of the American Type Culture Collection.

You are authorized to use this product for research use only. It is not intended for human use.



TB Contract Antibody QC Sheet

General Information:

Product: anti-ESat6 Rabbit Polyclonal Antibody (Rv3875)
Lot Number: 12.ESat6.3.19.6.rp
Species: *Mycobacterium tuberculosis*
Strain: H37Rv
Type: Rabbit Serum

Production Information:

Cell Line: N/A SOP#: Notebook/pp: N/A
Amount of CS Harvested: N/A Clarity: clear
IgG Purification: N/A SOP#: N/A Notebook/pp: N/A

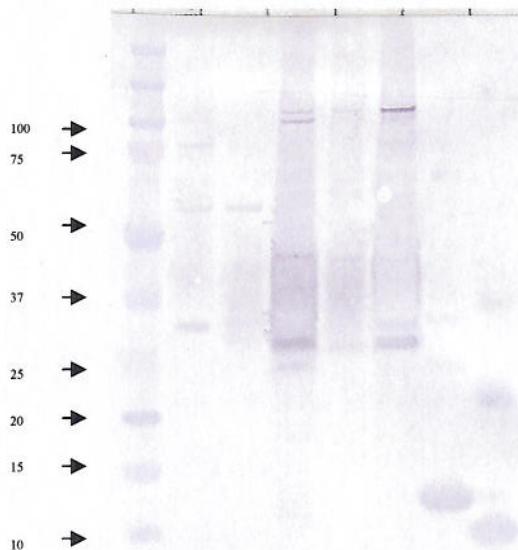
QC Information:

Tested Against: CYT, CFP, MEM, CW, WCL, CFP10, ESat6
SOP#: 011 Notebook/pp: CA/KW NB#1 pAb pp. 45-56, 62-66, 67, 71-80, 85-87
Titer: 1:5,000 Western blot: X ELISA: _____

Special Instructions:

QC Western blot:

1. Protein Standard
2. CYT
3. CFP
4. MEM
5. CW
6. WCL
7. CFP10
8. ESat6



Aliquot Information: 158 aliquots @ 0.1mL

David Adams 10 May 12
Research Associate / Date

[Signature] 5/11/2012
Lab Supervisor / Date