

***Helicobacter pullorum*, Strain MIT 98-5489**

Catalog No. HM-124

Product Description: *Helicobacter pullorum* (*H. pullorum*), strain MIT 98-5489 was isolated from the stool of a human with gastroenteritis in Canada.

Lot^{1,2}: 60504837

Manufacturing Date: 28FEB2012

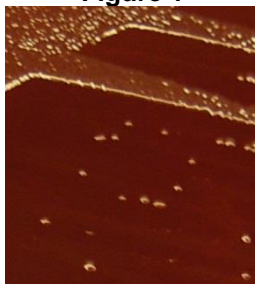
TEST	SPECIFICATIONS	RESULTS
Phenotypic Analysis Cellular morphology Colony morphology ³	Report results Report results	Gram-negative rod Circular, umbilicate, non-pigmented and translucent (Figure 1)
Genotypic Analysis Sequencing of 16S ribosomal RNA gene (~ 850 base pairs)	≥ 99% identical to GenBank: ABQU01000097 (<i>H. pullorum</i> , strain MIT 98-5489)	≥ 99% identical to GenBank: ABQU01000097 (<i>H. pullorum</i> , strain MIT 98-5489)
Viability (post-freeze)³	Growth	Growth

¹Quality control of HMP material is only performed to demonstrate that the material distributed by BEI Resources is identical to the deposited material. It should not be considered a complete characterization of the deposited organism.

²*H. pullorum*, strain MIT 98-5489 was deposited by James G. Fox, D.V.M., Professor and Director, Division of Comparative Medicine, Massachusetts Institute of Technology, Cambridge, Massachusetts. The deposited material was inoculated into Brucella Albimi Broth ([ATCC medium 1115](#)) and incubated for 7 days at 37°C in a microaerophilic atmosphere (~ 80% N₂, 7.5% H₂, 7.5% CO₂ and 5% O₂). The material from the initial growth was passaged once on Brucella Agar supplemented with 5% defibrinated sheep blood, 5% inactivated horse serum, 1% IsoVitalex, 1% haemin and 0.1% activated charcoal for 7 days at 37°C in a microaerophilic atmosphere to produce this lot.

³7 days at 37°C in a microaerophilic atmosphere on Brucella Agar supplemented with 5% defibrinated sheep blood, 5% inactivated horse serum, 1% IsoVitalex, 1% Haemin and 0.1% charcoal

Figure 1



Date: 21 MAY 2012

Signature:

Title:

Technical Manager, BEI Authentication or designee

ATCC®, on behalf of BEI Resources, hereby represents and warrants that the material provided under this certificate has been subjected to the tests and procedures specified and that the results described, along with any other data provided in this certificate, are true and accurate to the best of ATCC®'s knowledge.

ATCC® is a trademark of the American Type Culture Collection.

You are authorized to use this product for research use only. It is not intended for human use.

