

Monoclonal Anti-*Mycobacterium leprae* ML2038/BfrA, Clone CS-41 (produced *in vitro*)**Catalog No. NR-19368**

This reagent is the tangible property of the U.S. Government.

Product Description:

Antibody Class: IgG₁

Antibody Designation: CS-41

Monoclonal antibody to *Mycobacterium leprae* bacterioferritin (ML2038/BfrA) [also known as 22 kDa protein, major membrane protein (MMP-II)] was produced in cell culture using a B cell hybridoma generated by the fusion of myeloma cells with immunized mouse splenocytes.

Lot: mm.CS-41.06.07.10JS**Manufacturing Date: 07JUN2010**

QC testing was performed by Colorado State University under the Leprosy Research Support Contract (NIH). The Colorado State University documentation for lot mm.CS-41.06.07.10JS is attached.

ATCC[®], on behalf of BEI Resources, hereby represents and warrants that the material provided under this certificate has been subjected by the contractor to the tests and procedures specified and that the results described, along with any other data provided in this certificate, are true and accurate to the best of ATCC[®]'s knowledge.

ATCC[®] is a trademark of the American Type Culture Collection.

You are authorized to use this product for research use only. It is not intended for human use.



TB Contract Antibody QC Sheet

General Information: Mouse monoclonal antiserum to ML2038 (*M. leprae* bacterioferritin, major membrane protein-II)

Product: mouse monoclonal CS-41 6d culture supernatant

Lot Number: mm.CS-41.06.07.10JS

Species: *Mycobacterium leprae*

Strain: N/A Type: mouse mAb

Production Information:

Cell Line: N/A Notebook/pp: John Spencer, Notebook #3, pp 146-147

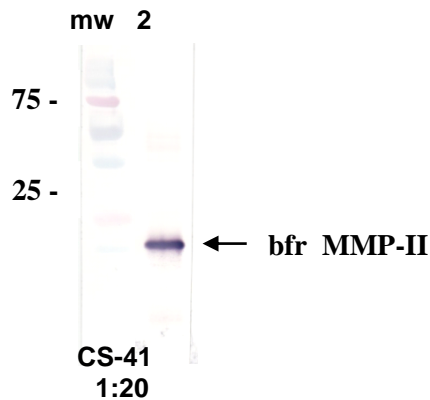
Amount of supernatant harvested: 80 mL Clarity: clear

QC Information: Western blot towards native *M. leprae* MLMA (membrane) protein.

Notebook/pp: same as above Titer: >1:20 Western blot: >1:20

Special Instructions: 1 mL, lyophilized; reconstitute with sterile distilled water; store frozen

QC Western blot: lane 1, mw markers; lane 2, 5 µg *M. leprae* native MLMA protein.



Aliquot Information: ____ 1 mL, lyophilized_____

John Spencer

John Spencer

Produced 6/7/10

Lab Supervisor / Date 6/23/10