

Genomic DNA from *Actinomyces* sp., Oral Taxon 178, Strain F0338

Catalog No. HM-146D

Product Description: Genomic DNA was obtained from a preparation of *Actinomyces* sp., Oral Taxon 178, strain F0338.

Lot^{1,2}: 60428347

Manufacturing Date: 21OCT2011

TEST	SPECIFICATIONS	RESULTS
Sequencing of 16S Ribosomal RNA Gene (~ 1400 base pairs)	≥ 99% identical to GenBank AEUH01000060 (<i>Actinomyces</i> sp., Oral Taxon 178, strain F0388)	≥ 99% identical to GenBank AEUH01000060 (<i>Actinomyces</i> sp., Oral Taxon 178, strain F0388)
Agarose Gel Electrophoresis	High molecular weight chromosomal DNA	High molecular weight chromosomal DNA (Figure 1)
Concentration by PicoGreen® Measurement	0.7 to 1.5 µg in 25 to 100 µL per vial	1.0 µg in 100 µL per vial (10 µg/mL)
Functional Activity by PCR Amplification 16S ribosomal RNA gene	~ 1500 bp amplicon	~ 1500 bp amplicon
OD₂₆₀/OD₂₈₀ Ratio	1.7 to 2.0	1.8
Bacterial Inactivation 10% of total yield plated on Tryptic Soy Agar with 5% defibrinated sheep blood ^{3,4}	No viable bacteria detected	No viable bacteria detected

¹Quality control of HMP organisms used for DNA extraction is only performed to demonstrate that the material produced by BEI Resources is identical to the deposited material. It should not be considered a complete characterization of the deposited organism.

²The bacterial preparation used for extraction of genomic DNA was produced by Actinomyces Broth ([ATCC medium 7](#)) culture of BEI Resources HM-146 (Lot 60321899). After incubation for 72 hours at 37°C in an anaerobic atmosphere (80% N₂:10% CO₂:10% H₂), genomic DNA was extracted using proprietary technology.

³7 days at 37°C in an anaerobic atmosphere (80% N₂:10% CO₂:10% H₂)

⁴An extraction procedure was used that has been shown to consistently inactivate 100% of Gram-positive and Gram-negative bacteria.

Date: 05 MAR 2012

Signature: 

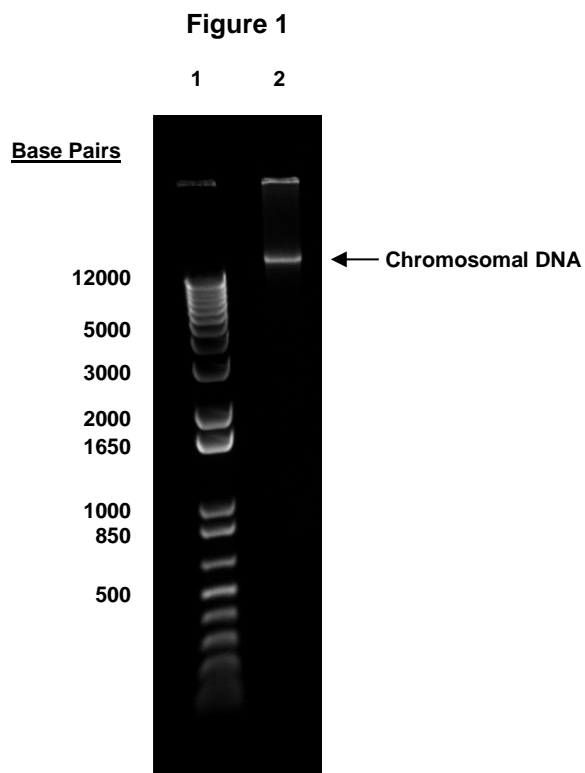
Title: Technical Manager, BEI Authentication or designee

ATCC®, on behalf of BEI Resources, hereby represents and warrants that the material provided under this certificate has been subjected to the tests and procedures specified and that the results described, along with any other data provided in this certificate, are true and accurate to the best of ATCC®'s knowledge.

ATCC® is a trademark of the American Type Culture Collection.

You are authorized to use this product for research use only. It is not intended for human use.





Lane 1: Invitrogen™ TrackIt 1 Kb Plus DNA Ladder™
Lane 2: 200 ng of HM-146D