

Plasmid pMRLB.46 Containing Gene Rv3874 (Protein Cfp10) from *Mycobacterium tuberculosis*

Catalog No. NR-13297

This reagent is the tangible property of the U.S. Government.

Product Description: NR-13297 is a recombinant expression vector containing *Mycobacterium tuberculosis* gene Rv3874, which encodes a 10 kDa culture filtrate protein, Cfp10. Gene Rv3874 was amplified by PCR and cloned into pET23b for expression in *Escherichia coli*.

Lot¹: 59415499

Manufacturing Date: 15NOV2010

TEST	SPECIFICATIONS	RESULTS
PCR Amplification and Sequencing of Insert (~ 300 bp)	Insert identical to <i>M. tuberculosis</i> , strain H37Rv gene Rv3874	Insert identical to <i>M. tuberculosis</i> , strain H37Rv gene Rv3874
Agarose Gel Electrophoresis Linearization with <i>NdeI</i> ² Linearization with <i>HindIII</i> ³ Linearization with <i>SacI</i> ⁴ Digestion with <i>NdeI</i> and <i>HindIII</i>	~ 3.9 kb ~ 3.9 kb ~ 3.9 kb ~ 0.3 kb (insert); ~ 3.6 kb (vector)	~ 3.9 kb (Figure 1) ~ 3.9 kb (Figure 1) ~ 3.9 kb (Figure 1) ~ 0.3 kb; ~ 3.6 kb (Figure 1)
Concentration by PicoGreen[®] Measurement	0.7 to 1.5 µg in 25 to 100 µL per vial	1.1 µg in 27 µL per vial (41 µg/mL)
Absorbance Ratio (OD₂₆₀/OD₂₈₀)	≥ 1.7 to ≤ 2.0	1.9
Effective Bacterial Transformation	≥ 100 colonies per 10 ng	≥ 100 colonies per 10 ng

¹Produced in *Escherichia coli* MAX Efficiency[®] DH5α[™] cells (Invitrogen[™] 18258-012) and extracted using the Qiafilter Plasmid Midi Kit (QIAGEN[®] 12243)

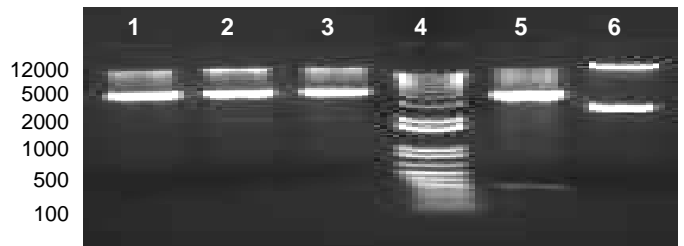
²*NdeI* (New England BioLabs, Inc. R0111L)

³*HindIII* (New England BioLabs, Inc. R0104M)

⁴*SacI* (New England BioLabs, Inc. R0157L)

Figure 1: Agarose Gel of Undigested and Restriction Enzyme Digested NR-13297.

Lane 1: NR-13297 digested with *NdeI*
Lane 3: NR-13297 digested with *HindIII*
Lane 2: NR-13297 digested with *SacI*
Lane 4: Invitrogen[™] TrackIt 1 Kb Plus DNA Ladder[™]
Lane 5: NR-13297 digested with *NdeI* and *HindIII*
Lane 6: Undigested NR-13297



Date: 14 FEB 2012

Signature:

Title:

Technical Manager, BEI Authentication or designee

ATCC[®], on behalf of BEI Resources, hereby represents and warrants that the material provided under this certificate has been subjected by the contractor to the tests and procedures specified and that the results described, along with any other data provided in this certificate, are true and accurate to the best of ATCC[®]'s knowledge.

ATCC[®] is a trademark of the American Type Culture Collection.

You are authorized to use this product for research use only. It is not intended for human use.



BEI Resources

www.beiresources.org

E-mail: contact@beiresources.org

Tel: 800-359-7370

Fax: 703-365-2898