

Genomic DNA from *Listeria monocytogenes*, Strain J0161

Catalog No. NR-13342

Product Description: Genomic DNA was obtained from a preparation of *Listeria monocytogenes* (*L. monocytogenes*), strain J0161. Strain J0161 was isolated from a case of human listeriosis linked to a multi-state outbreak from a turkey processing plant in the United States in 2000.

Lot¹: 58666830

Manufacturing Date: 26JAN2010

TEST	SPECIFICATIONS	RESULTS
Sequencing of 16S Ribosomal RNA Gene (~ 1410 bp)	Consistent with <i>L. monocytogenes</i> Identical to BEI Resources NR-13225	Consistent with <i>L. monocytogenes</i> ² Identical to BEI Resources NR-13225
Agarose Gel Electrophoresis	High molecular weight chromosomal DNA	High molecular weight chromosomal DNA (Figure 1)
Concentration by PicoGreen[®] Measurement	4 to 6 µg in 25 to 100 µL per vial	5.5 µg in 43 µL per vial (127 µg/mL)
Functional Activity by PCR Amplification 16S ribosomal RNA gene	~ 1500 bp amplicon	~ 1500 bp amplicon
OD₂₆₀/OD₂₈₀ Ratio	1.7 to 1.9	1.8
Bacterial Inactivation 10% of total yield plated on Tryptic Soy Agar with 5% sheep blood ^{3,4}	No viable bacteria detected	No viable bacteria detected

¹The bacterial preparation used for extraction of genomic DNA was produced by inoculation of the deposited material into Tryptic Soy Broth. After incubation for 24 hours at 37°C, genomic DNA was extracted using proprietary technology.

²Also consistent with other *Listeria* species

³7 days at 37°C in an aerobic atmosphere

⁴An extraction procedure was used that has been shown to consistently inactivate 100% of Gram-negative or Gram-positive bacteria.

Date: 11 NOV 2010

Signature: 

Title: Technical Manager, BEI Authentication or designee

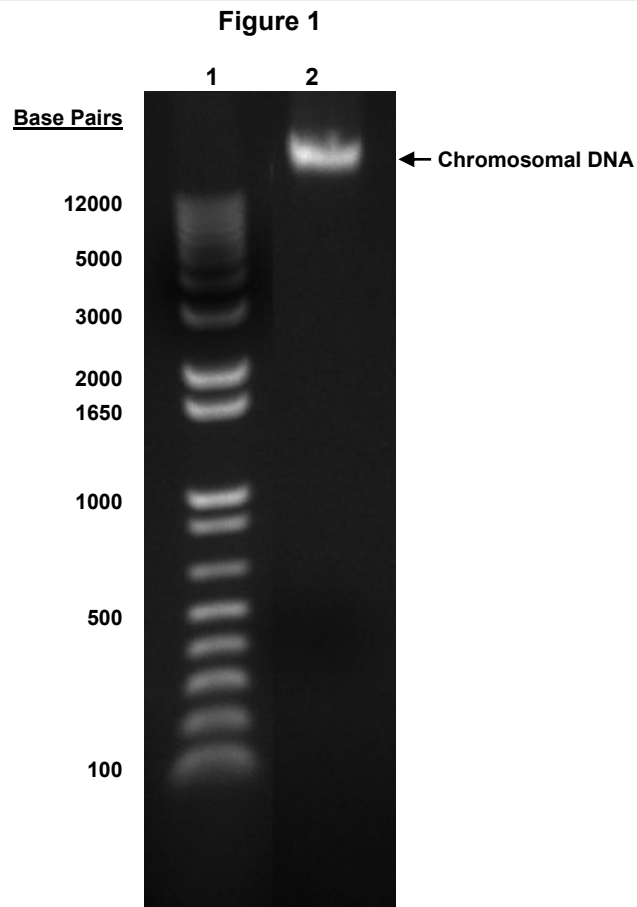
ATCC[®], on behalf of BEI Resources, hereby represents and warrants that the material provided under this certificate has been subjected to the tests and procedures specified and that the results described, along with any other data provided in this certificate, are true and accurate to the best of ATCC[®]'s knowledge.

ATCC[®] is a trademark of the American Type Culture Collection.

You are authorized to use this product for research use only. It is not intended for human use.



Certificate of Analysis for NR-13342



Lane 1: Invitrogen™ TrackIt™ 1 Kb Plus DNA Ladder
Lane 2: 200 ng of NR-13342