

Genomic DNA from *Escherichia* sp., Strain 3_2_53FAA

Catalog No. HM-38D

Product Description: Genomic DNA was obtained from a preparation of *Escherichia* sp., Strain 3_2_53FAA. *Escherichia* sp., strain 3_2_53FAA was isolated from an intestinal biopsy specimen from the descending colon of a 52-year old male with active Crohn’s disease in Calgary, Alberta, Canada.

Lot¹: 58911081

Manufacturing Date: 03DEC2009

TEST	SPECIFICATIONS	RESULTS
Sequencing of 16S Ribosomal RNA Gene (~ 1280 bp)	Consistent with <i>Escherichia</i> sp.	Consistent with <i>Escherichia</i> sp. ²
Agarose Gel Electrophoresis	High molecular weight chromosomal DNA	High molecular weight chromosomal DNA (Figure 1)
Concentration by PicoGreen[®] Measurement	0.75 to 1.25 µg in 25 to 100 µL per vial	0.9 µg in 39 µL per vial (23 µg/mL)
Functional Activity by PCR Amplification 16S ribosomal RNA gene	~ 1500 bp amplicon	~ 1500 bp amplicon
OD₂₆₀/OD₂₈₀ Ratio	1.7 to 1.9	1.9
Bacterial Inactivation 10% of total yield plated on Tryptic Soy Agar ^{3,4}	No viable bacteria detected	No viable bacteria detected

¹The bacterial preparation used for extraction of genomic DNA was produced by Tryptic Soy Broth culture of the deposited material. After incubation for 24 hours at 37°C and aerobic atmosphere, genomic DNA was extracted using proprietary technology.

²Also consistent with *Shigella* species

³7 days at 37°C in an aerobic atmosphere

⁴An extraction procedure was used that has been shown to consistently inactivate 100% of Gram-negative bacteria.

Date: 05 APR 2010

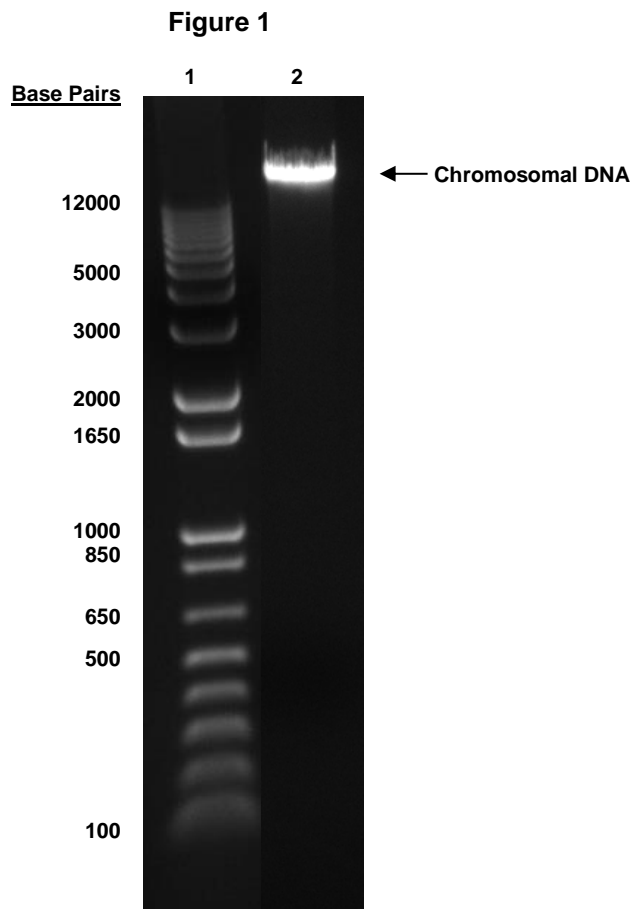
Signature: Signature on File

Title: Technical Manager, BEI Authentication or designee

ATCC[®], on behalf of BEI Resources, hereby represents and warrants that the material provided under this certificate has been subjected by ATCC[®] to the tests and procedures specified and that the results described, along with any other data provided in this certificate, are true and accurate to the best of ATCC[®]'s knowledge.

ATCC[®] is a trademark of the American Type Culture Collection. You are authorized to use this product for research use only. It is not intended for human use.





Lane 1: Invitrogen™ TrackIt 1 Kb Plus DNA Ladder™
Lane 2: 200 ng of HM-38D