

Genomic DNA from *Escherichia coli*, Strain 1885-77 (EDL 1282)

Catalog No. NR-3051

Product Description: Genomic DNA was isolated from a preparation of enteroinvasive *Escherichia coli* (EIEC) strain 1885-77 (EDL 1282), serotype O29:NM.

Lot¹: 58666832

Manufacturing Date: 19JUN2009

TEST	SPECIFICATIONS	RESULTS
Sequencing of 16S Ribosomal RNA Gene (~ 1390 bp)	Consistent with <i>Escherichia coli</i>	Consistent with <i>Escherichia coli</i> ²
Agarose Gel Electrophoresis	High molecular weight chromosomal DNA	High molecular weight chromosomal DNA (Figure 1)
Concentration by PicoGreen[®] Measurement	4 to 6 µg in 25 to 100 µL per vial	5.7 µg in 43 µL per vial (132 µg/mL)
Functional Activity by PCR Amplification 16S ribosomal RNA gene	~ 1500 bp amplicon	~ 1500 bp amplicon
OD₂₆₀/OD₂₈₀ Ratio	1.7 to 1.9	1.8
Bacterial Inactivation 10% of total yield plated on Trypticase Soy Agar ^{3,4}	No viable bacteria detected	No viable bacteria detected

¹NR-3051 was produced by Tryptic Soy Broth culture of NR-100 (Lot: 3670406). After incubation for 24 hours at 37°C and aerobic atmosphere, genomic DNA was extracted using proprietary technology.

²Also consistent with *Shigella* species

³Incubated for 7 days at 37°C and aerobic atmosphere

⁴An extraction procedure was used that has been shown to consistently inactivate 100% of Gram-negative bacteria

Date: 02 SEP 2009

Signature: Signature on File

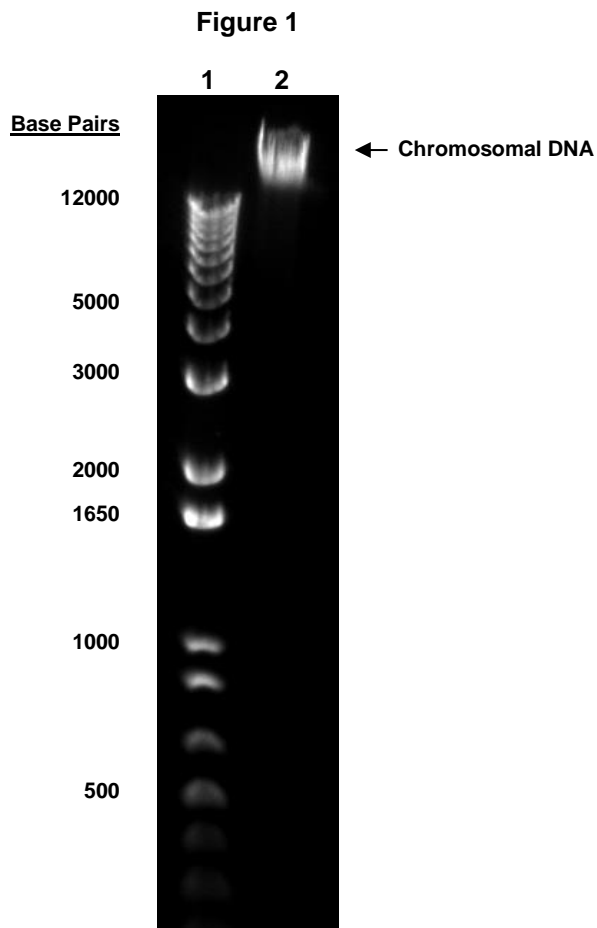
Title: Technical Manager, BEI Authentication or designee

ATCC[®], on behalf of BEI Resources, hereby represents and warrants that the material provided under this certificate has been subjected to the tests and procedures specified and that the results described, along with any other data provided in this certificate, are true and accurate to the best of ATCC[®]'s knowledge.

ATCC[®] is a trademark of the American Type Culture Collection.

You are authorized to use this product for research use only. It is not intended for human use.





Lane 1: Invitrogen™ TrackIt™ 1 Kb Plus DNA Ladder
Lane 2: 200 ng of NR-3051