

Genomic DNA from *Escherichia coli*, Strain EDL932

Catalog No. NR-3045

Product Description: Genomic DNA was isolated from a preparation of enterohemorrhagic *Escherichia coli* (EHEC) strain EDL932 serotype O157:H7.

Lot¹: 7559643

Manufacturing Date: 09AUG2006

TEST	SPECIFICATIONS	RESULTS
Sequencing of 16S Ribosomal RNA Gene (~ 480 bps)	Consistent with <i>Escherichia coli</i>	Consistent with <i>Escherichia coli</i> ²
Presence of Plasmid Confirmed by PCR Amplification pO157	Confirmed	Confirmed
Agarose Gel Electrophoresis	High molecular weight chromosomal DNA	High molecular weight chromosomal DNA (Figure 1)
Concentration by PicoGreen[®] Measurement	4 to 6 µg in 25 to 100 µL per vial	5 µg in 31 µL per vial (161 µg/mL)
Functional Activity by PCR Amplification 16S ribosomal RNA gene Virulence markers on chromosome ³ <i>stx1</i> <i>stx2</i> <i>eaeA</i>	~ 1500 bp amplicon ~ 349 bp amplicon ~ 404 bp amplicon ~ 526 bp amplicon	~ 1500 bp amplicon ~ 349 bp amplicon ~ 404 bp amplicon ~ 526 bp amplicon
OD₂₆₀/OD₂₈₀ Ratio	1.7 to 1.9	1.9
Bacterial Inactivation 10% of total yield plated on Tryptic Soy Agar ^{4,5}	No viable bacteria detected	No viable bacteria detected

¹The bacterial preparation used for extraction of genomic DNA was produced by inoculation of BEI Resources NR-7 (Lot 3560113) in broth (Tryptic Soy Broth, BD 211825) culture. After incubation for 24 hours at 37°C and aerobic atmosphere, genomic DNA was extracted using proprietary technology.

²Also consistent with *Shigella* species

³Kimata, K., et al. "Rapid Categorization of Pathogenic *Escherichia coli* by Multiplex PCR." *Microbiol. Immunol.* 49 (2005): 485-492. PubMed: 15965295.

⁴7 days at 37°C in an aerobic atmosphere

⁵An extraction procedure was used that has been shown to consistently inactivate 100% of Gram-negative bacteria.

Date: 29 JAN 2009

Signature: Signature on File

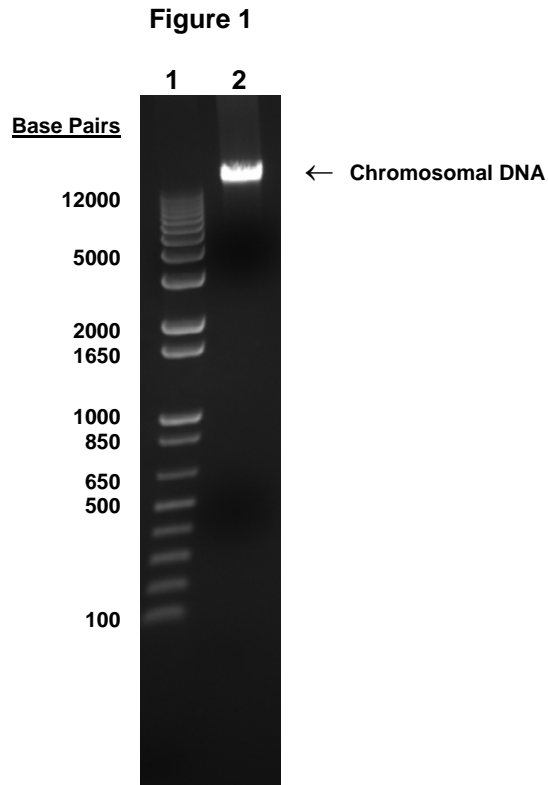
Title: Technical Manager, BEI Authentication or designee

ATCC[®], on behalf of BEI Resources, hereby represents and warrants that the material provided under this certificate has been subjected to the tests and procedures specified and that the results described, along with any other data provided in this certificate, are true and accurate to the best of ATCC[®]'s knowledge.

ATCC[®] is a trademark of the American Type Culture Collection.

You are authorized to use this product for research use only. It is not intended for human use.





Lane 1: Invitrogen™ TrackIt 1 Kb Plus DNA Ladder™
Lane 2: 200 ng of NR-3045